



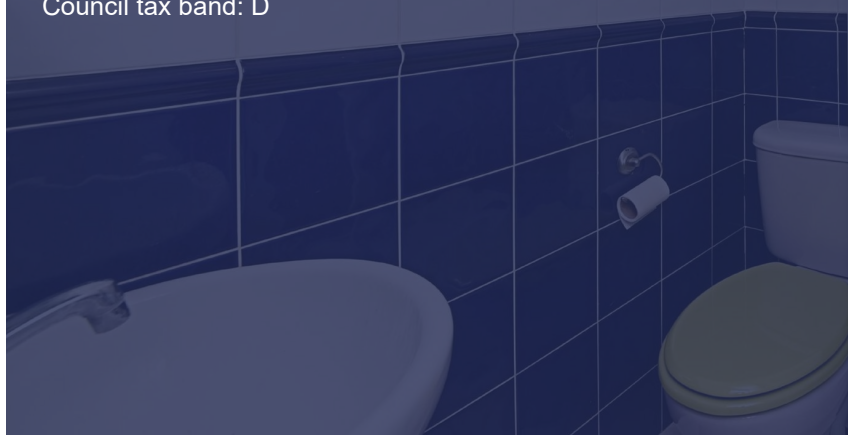
Nether Street, Finchley Central, N3 1JD

£1,700 Per Week -

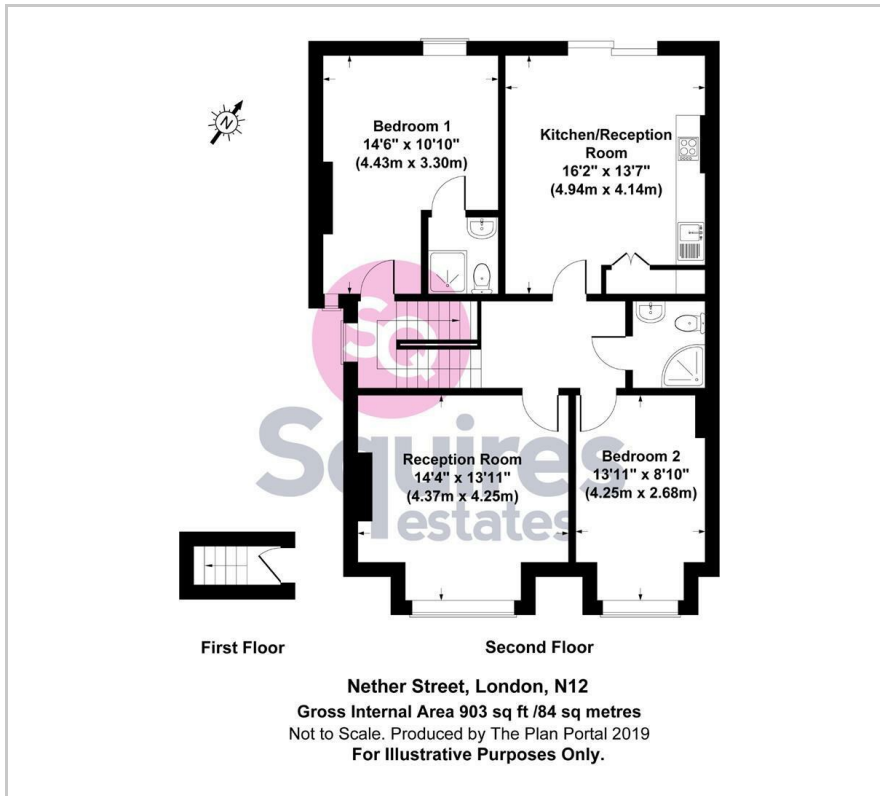
A spacious split level 2 double bedroom flat located on the top floor of a period conversion. The apartment has a fantastic eat in kitchen with amazing views through a glass sliding door with Juliet balcony. Good sized separate reception room. Allocated parking space for 1 car and a section of rear garden. Available part furnished from 15th April.

Deposit: £1961.53
Council tax band: D

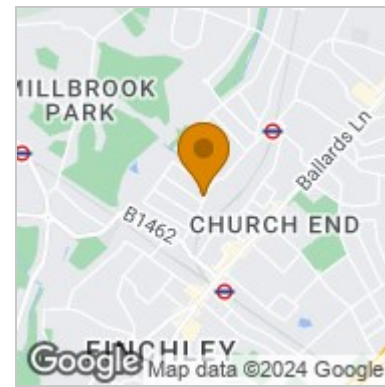
- 2 double bedrooms
- Split level
- Large modern kitchen
- Fantastic views
- Separate reception room
- Allocated parking space
- Section of garden
- Part furnished
- Tax band D
- Available from 15th April



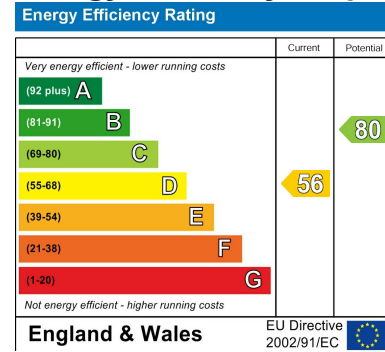
Floor Plan



Area Map



Energy Efficiency Graph



These particulars, whilst believed to be accurate are set out as a general outline only for guidance and do not constitute any part of an offer or contract. Intending purchasers should not rely on them as statements of representation of fact, but must satisfy themselves by inspection or otherwise as to their accuracy. No person in this firm's employment has the authority to make or give any representation or warranty in respect of the property.

Finchley Branch
 181a Squires Lane,
 Finchley,
 London N3 2QS
 Tel 020 8343 2111

Hendon Branch
 16 Central Circus Parade,
 Queens Road, Hendon,
 London NW4 3AS
 Tel 020 8202 0808

Mill Hill Branch
 7 Thornfield Parade,
 Holders Hill Road, Mill Hill,
 London NW7 1LN
 Tel 020 8349 3030

