



## Lichfield Grove, Finchley, N3 2JP

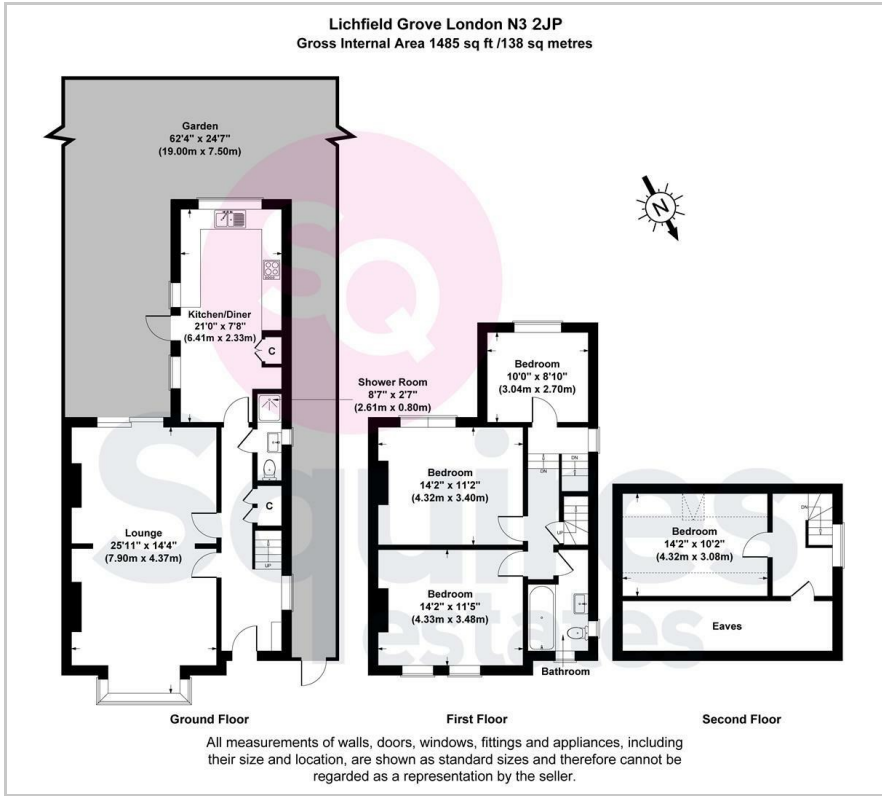
£815,000 - Freehold

**\*\*CHAIN FREE\*\*** A recently decorated, 1485 sq ft 3 bedroom plus loft room semi-detached house located within a few minutes walk of Finchley Central Tube station and close to shops and parks. The property features a near-26ft through-reception room and benefits include a 21ft kitchen/diner, a downstairs shower room as well as a new, first floor family bathroom, a private rear garden with side access and off street parking for 2 cars. The house would make an ideal family home.

- Semi-detached
- 3 bedrooms plus loft room
- 2 off street parking spaces
- Private garden
- Chain free
- Extremely close to Tube
- Newly decorated
- Barnet council tax band F



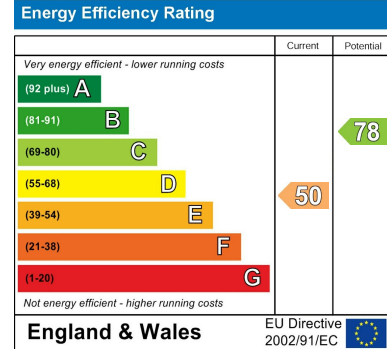
# Floor Plan



# Area Map



# Energy Efficiency Graph



These particulars, whilst believed to be accurate are set out as a general outline only for guidance and do not constitute any part of an offer or contract. Intending purchasers should not rely on them as statements of representation of fact, but must satisfy themselves by inspection or otherwise as to their accuracy. No person in this firm's employment has the authority to make or give any representation or warranty in respect of the property.

## Finchley Branch

181a Squires Lane,  
Finchley,  
London N3 2QS  
Tel 020 8343 2111

## Hendon Branch

16 Central Circus Parade,  
Queens Road, Hendon,  
London NW4 3AS  
Tel 020 8202 0808

## Mill Hill Branch

7 Thornfield Parade,  
Holders Hill Road, Mill Hill,  
London NW7 1LN  
Tel 020 8349 3030

