



Mountfield Road, London, N3 3NE

Offers Over £294,000 - Leasehold

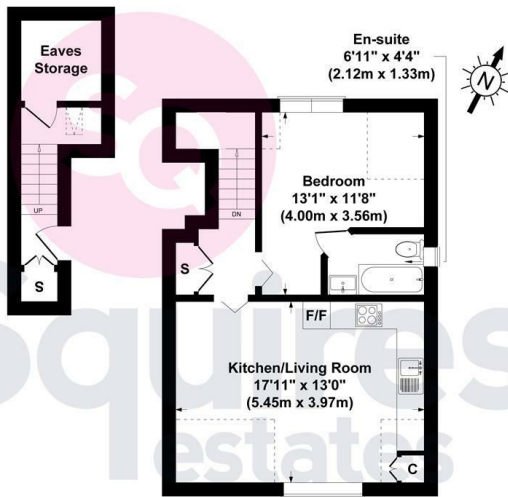
****CHAIN FREE**** A 1 bedroom flat situated on the top (second) floor of this period conversion within this quiet turning off Regents Park Road. The property features an approximately 18ft reception room with modern open-plan kitchen and further benefits include a contemporary bathroom, extensive storage and a long lease. The flat is well located for the amenities of both Finchley Central and Temple Fortune and would make an ideal first time purchase.

Lease: Approx. 146 years
Ground Rent: N/A
Service Charge: Ad-Hoc

- **Period conversion**
- **Top floor**
- **1 bedroom**
- **Modern kitchen and bathroom**
- **Extensive storage**
- **Chain free**
- **Ideal first time purchase**
- **Barnet council tax band B**

Floor Plan

Mountfield Road London N3 3ND
 Gross Internal Area 506 sq ft /47 sq metres
 (Excluding Eaves Storage)

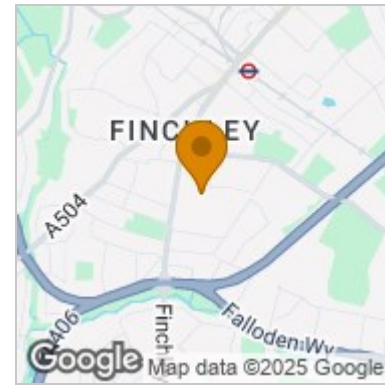


First Floor

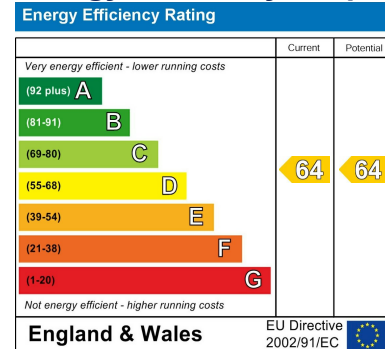
Second Floor

All measurements of walls, doors, windows, fittings and appliances, including their size and location, are shown as standard sizes and therefore cannot be regarded as a representation by the seller.

Area Map



Energy Efficiency Graph



These particulars, whilst believed to be accurate are set out as a general outline only for guidance and do not constitute any part of an offer or contract. Intending purchasers should not rely on them as statements of representation of fact, but must satisfy themselves by inspection or otherwise as to their accuracy. No person in this firm's employment has the authority to make or give any representation or warranty in respect of the property.

Finchley Branch

181a Squires Lane,
 Finchley,
 London N3 2QS
 Tel 020 8343 2111

Hendon Branch

16 Central Circus Parade,
 Queens Road, Hendon,
 London NW4 3AS
 Tel 020 8202 0808

Mill Hill Branch

7 Thornfield Parade,
 Holders Hill Road, Mill Hill,
 London NW7 1LN
 Tel 020 8349 3030

