



## Addington Drive, London, N12 0PH

### £3,950 Per Week -

Squires Estates is excited to present this spacious and Recently refurbished and renovated 6-bedroom semi-detached house, conveniently situated off Sandringham Gardens and High Road North Finchley.

On the ground floor, you'll find elegant wooden flooring throughout, along with a front reception room, a fully tiled shower room, and a large reception area that seamlessly combines with the kitchen/diner at the rear, which opens up to a stunning new garden. Moving to the first floor, there are three double bedrooms, one single bedroom, and a family bathroom. Additionally, the converted loft space features a generous double bedroom, a small single room that can serve as a study, and a separate shower room. The property is further enhanced by high-spec appliances and a private driveway that accommodates parking for two vehicles.

Addington Drive boasts a prime location, perfect for accessing the area's excellent schools. Public transport is readily available, with bus services from the nearby North Finchley bus station, and a selection of underground stations within easy reach.

This property is offered unfurnished and is available for immediate occupancy.

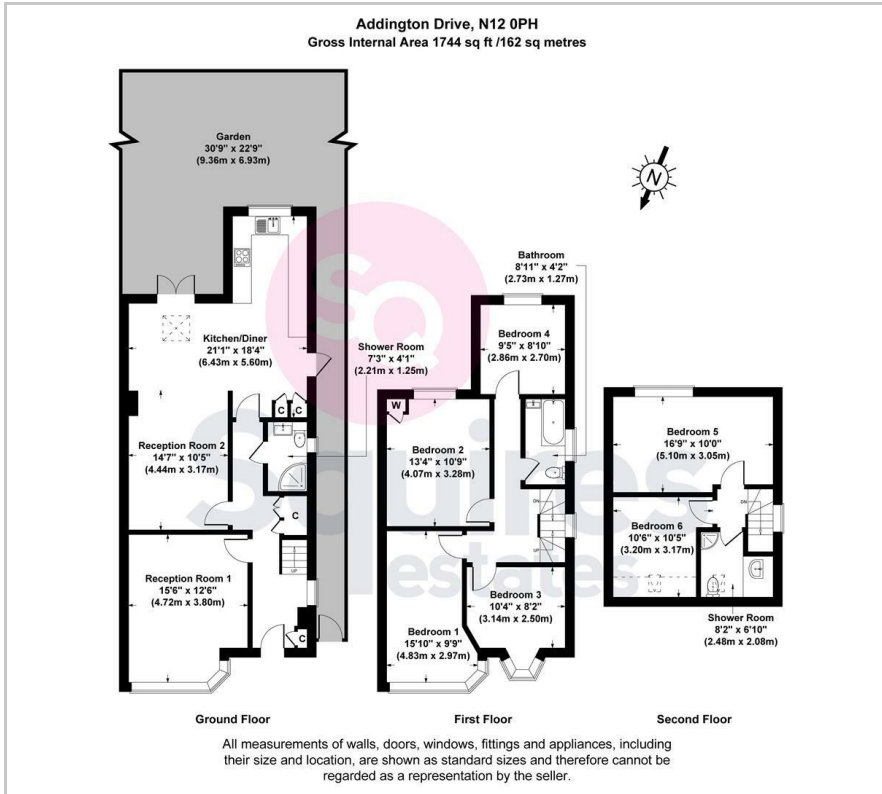
Deposit: £4,557.69  
Council Tax Band: E

- 6 Bedrooms
- 2 Receptions
- 3 Bathrooms
- Recently renovated
- Private driveway with space for 2 vehicles
- Unfurnished
- Council tax band
- Available immediately

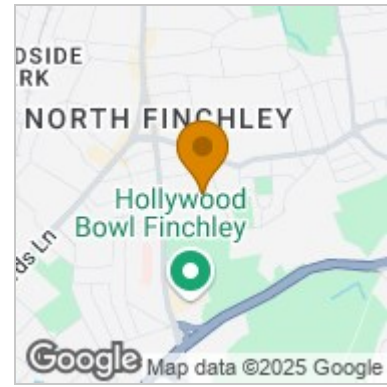




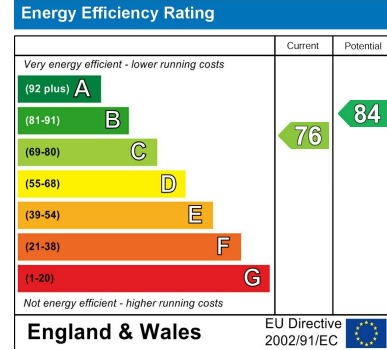
# Floor Plan



# Area Map



# Energy Efficiency Graph



These particulars, whilst believed to be accurate are set out as a general outline only for guidance and do not constitute any part of an offer or contract. Intending purchasers should not rely on them as statements of representation of fact, but must satisfy themselves by inspection or otherwise as to their accuracy. No person in this firm's employment has the authority to make or give any representation or warranty in respect of the property.

## Finchley Branch

181a Squires Lane,  
Finchley,  
London N3 2QS  
Tel 020 8343 2111

## Hendon Branch

16 Central Circus Parade,  
Queens Road, Hendon,  
London NW4 3AS  
Tel 020 8202 0808

## Mill Hill Branch

7 Thornfield Parade,  
Holders Hill Road, Mill Hill,  
London NW7 1LN  
Tel 020 8349 3030

