



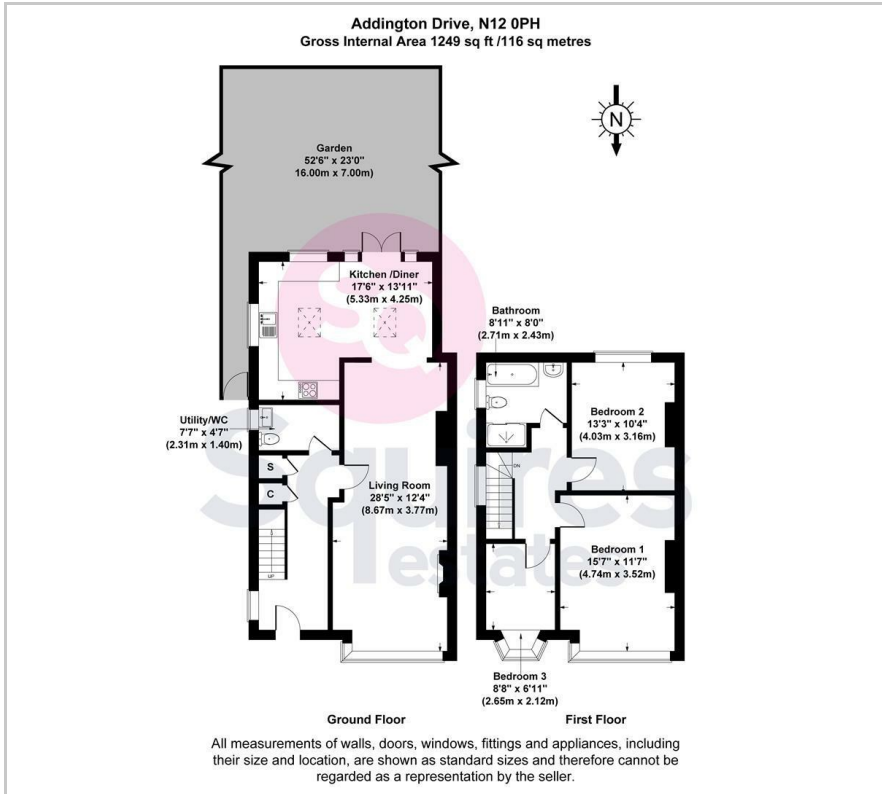
Addington Drive, North Finchley, N12 0PH

£825,000 - Freehold

****CHAIN FREE**** A fantastic 3 bedroom, extended semi-detached house situated within this quiet turning close to numerous schools. The property is offered in good condition and benefits include a modern eat-in kitchen, a well maintained 56ft south facing garden, a large family bathroom with separate shower cubicle, a downstairs W.C. and off street parking for 2 cars. The house would make a lovely family home.

- 3 Bedrooms
- Semi detached
- Off street parking
- 56' south facing garden
- Downstairs WC
- Barnet council tax band E
- Chain free
- Family bathroom

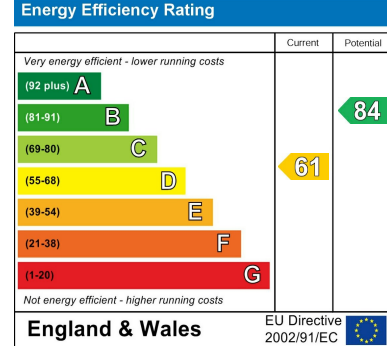
Floor Plan



Area Map



Energy Efficiency Graph



These particulars, whilst believed to be accurate are set out as a general outline only for guidance and do not constitute any part of an offer or contract. Intending purchasers should not rely on them as statements of representation of fact, but must satisfy themselves by inspection or otherwise as to their accuracy. No person in this firm's employment has the authority to make or give any representation or warranty in respect of the property.

Finchley Branch

181a Squires Lane,
Finchley,
London N3 2QS
Tel 020 8343 2111

Hendon Branch

16 Central Circus Parade,
Queens Road, Hendon,
London NW4 3AS
Tel 020 8202 0808

Mill Hill Branch

7 Thornfield Parade,
Holders Hill Road, Mill Hill,
London NW7 1LN
Tel 020 8349 3030

