



Royal Engineers Way, Mill Hill, NW7 1RY

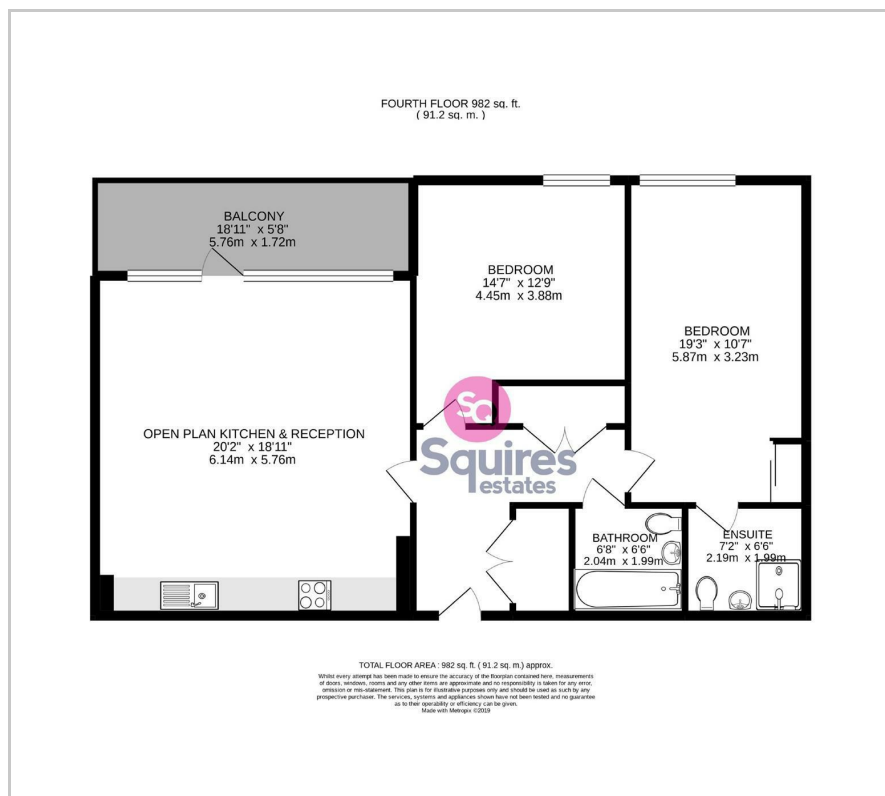
£2,300 Per Week -

A stunning 4th floor 2 double bedroom apartment located in a modern block within Millbrook Park. One of the largest flats within the development the flat boasts a large reception room with open plan kitchen, fantastic balcony with amazing views. High spec bathroom and en-suite shower room to the master bedroom. The block offers a modern entrance with 2 lifts and underground parking with one allocated space that has an electric charging point. This exciting development has a concierge, a gym, private residents only gardens, a cycle store, games and screening room. Located moments away from Mill Hill East Underground Station. Unfurnished and available end of April.

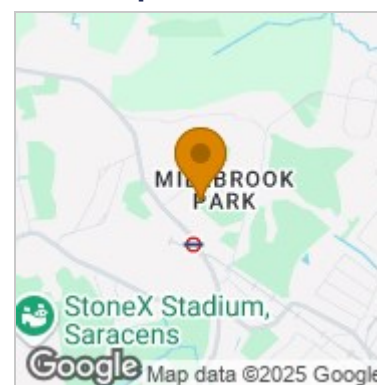
Deposit £2538.46
Council tax band F

- Two double bedrooms
- Council tax band F
- Large balcony
- Fantastic views
- Over 900 square foot
- Underground parking space
- Unfurnished
- Available end of April

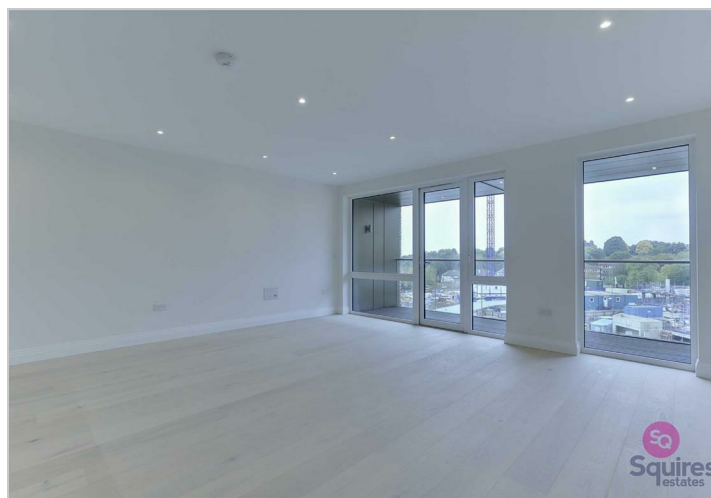
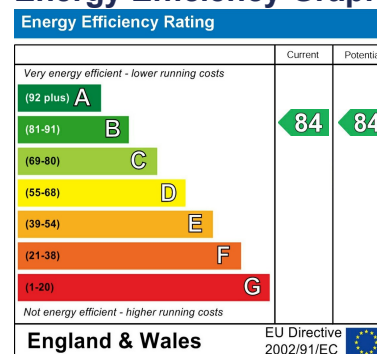
Floor Plan



Area Map



Energy Efficiency Graph



These particulars, whilst believed to be accurate are set out as a general outline only for guidance and do not constitute any part of an offer or contract. Intending purchasers should not rely on them as statements of representation of fact, but must satisfy themselves by inspection or otherwise as to their accuracy. No person in this firm's employment has the authority to make or give any representation or warranty in respect of the property.

Finchley Branch

181a Squires Lane,
Finchley,
London N3 2QS
Tel 020 8343 2111

Hendon Branch

16 Central Circus Parade,
Queens Road, Hendon,
London NW4 3AS
Tel 020 8202 0808

Mill Hill Branch

7 Thornfield Parade,
Holders Hill Road, Mill Hill,
London NW7 1LN
Tel 020 8349 3030

