



Long Lane, Finchley, N3 2HX

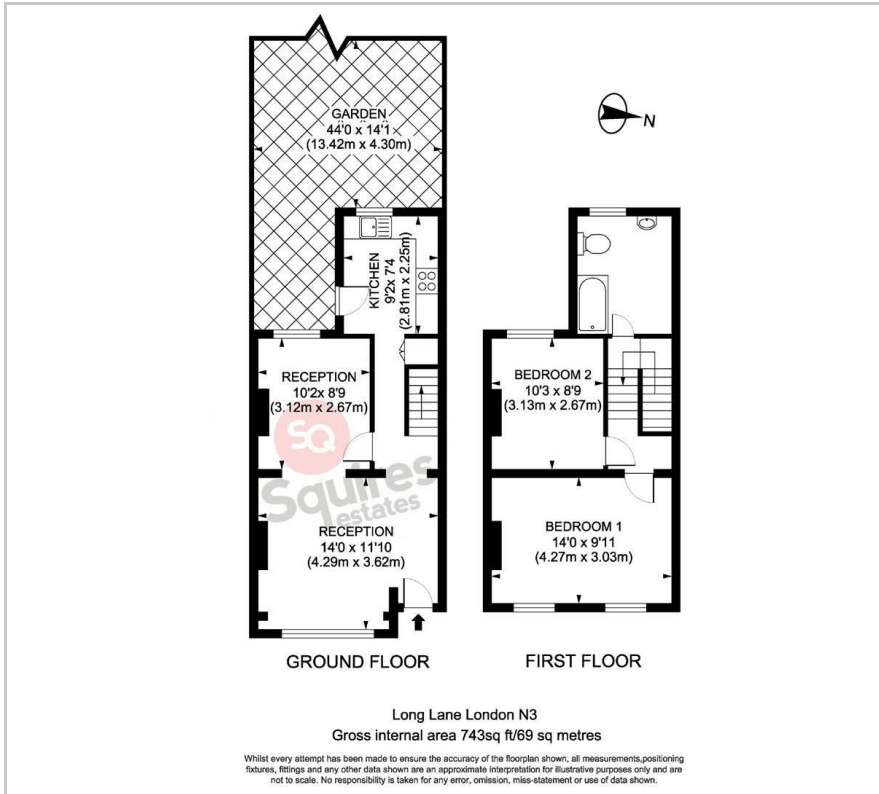
£2,000 Per Month -

A lovely 2 double bedroom house located within a short distance to Victoria Park and Finchley Central. The house offers a large through reception room with wooden flooring, leading back to a modern kitchen, which in turn leads out to a lovely rear garden. The upstairs comprises of 2 double bedrooms and family bathroom. Further benefits include off street parking. Offered Unfurnished and available immediately.

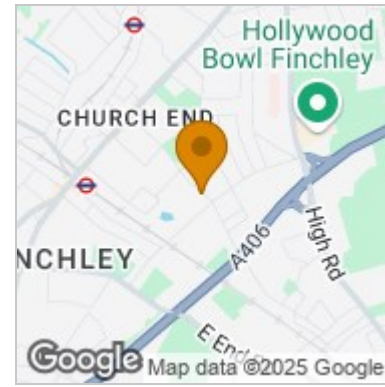
Deposit £2307.69
Council tax band D

- Terraced cottage
- 2 bedrooms
- Private garden
- 1 parking space
- Close to tube
- Unfurnished
- Available immediately
- Council tax band D

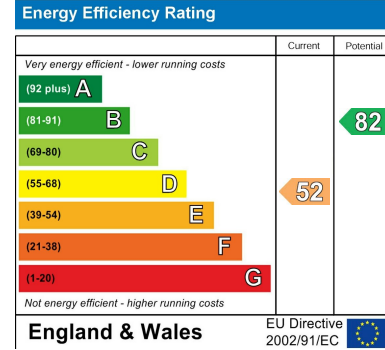
Floor Plan



Area Map



Energy Efficiency Graph



These particulars, whilst believed to be accurate are set out as a general outline only for guidance and do not constitute any part of an offer or contract. Intending purchasers should not rely on them as statements of representation of fact, but must satisfy themselves by inspection or otherwise as to their accuracy. No person in this firm's employment has the authority to make or give any representation or warranty in respect of the property.

Finchley Branch

181a Squires Lane,
Finchley,
London N3 2QS
Tel 020 8343 2111

Hendon Branch

16 Central Circus Parade,
Queens Road, Hendon,
London NW4 3AS
Tel 020 8202 0808

Mill Hill Branch

7 Thornfield Parade,
Holders Hill Road, Mill Hill,
London NW7 1LN
Tel 020 8349 3030

