



## Great North Way, Hendon, NW4 1PW

£400,000 - Leasehold

This splendid purpose-built flat offers a harmonious blend of comfort and modern living. Boasting two well-proportioned bedrooms, including a master suite with an en suite bathroom, this residence is perfect for both individuals and small families seeking a tranquil location.

The heart of the home is a fully fitted kitchen that seamlessly connects to a large lounge, creating an inviting space for relaxation and entertaining. The flat is bathed in natural light, thanks to its bright and spacious layout, and it overlooks Copthall Playing Fields, providing a serene backdrop for your daily life.

Residents will appreciate the convenience of an allocated parking space within a secure, gated development, ensuring peace of mind. Additionally, the presence of a passenger lift enhances accessibility, making this flat suitable for all.

This property is not just a home; it is a lifestyle choice, offering a perfect balance of comfort, security, and location. With its modern amenities and proximity to local parks and transport links, this flat is an excellent opportunity for those looking to settle in a vibrant area of Hendon. Do not miss the chance to make this delightful property your own.

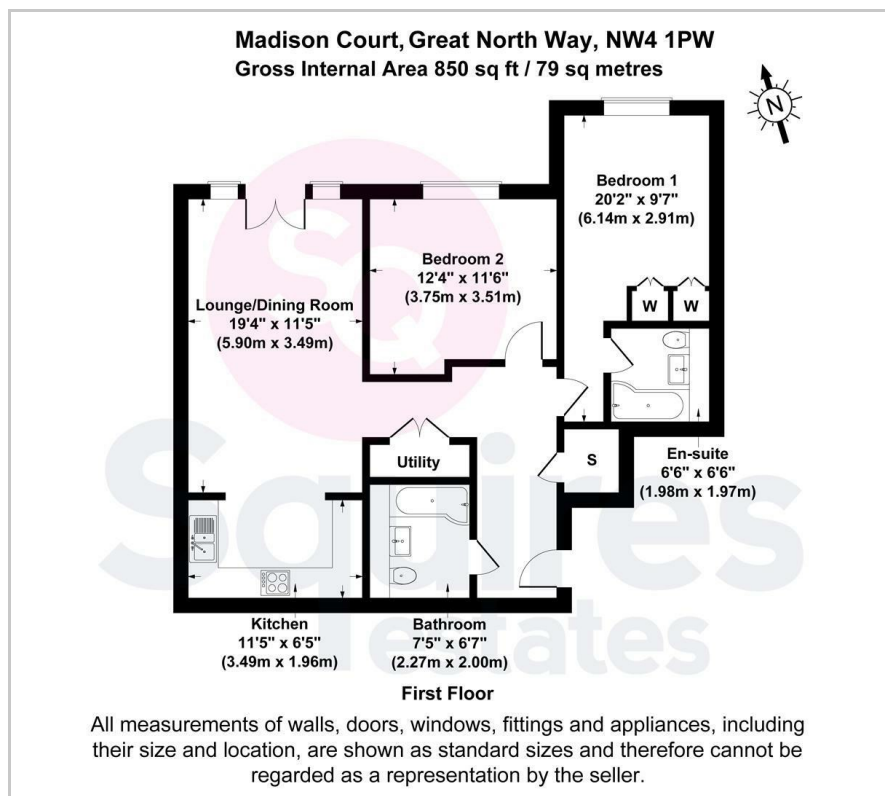
Contact Squires Estates today to arrange a viewing.

Leasehold - 104 years remaining  
Ground Rent: £250 per annum  
Service Charge: £2000 per annum  
Barnet Council Tax Band E

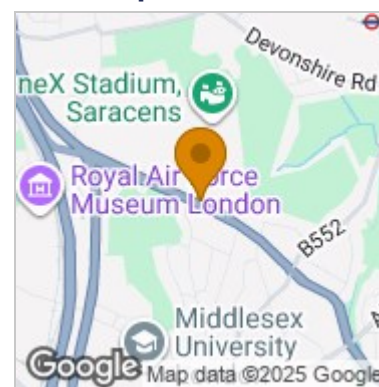
- Purpose-built Flat
- Two Double Bedrooms
- Spacious
- Bright & Airy Interiors
- Scenic Views Overlooking Copthall Playing Fields
- Gated Development with Allocated Parking
- Passenger Lift
- Excellent Location
- Close to Parks & Transport Links in Hendon
- Barnet Council Tax Band E



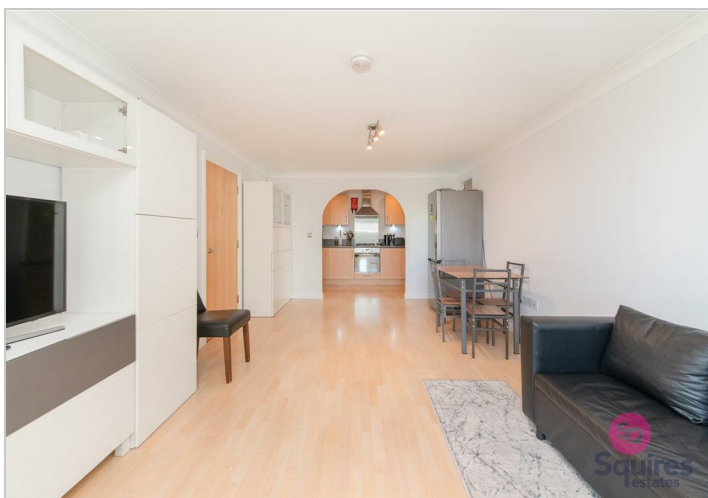
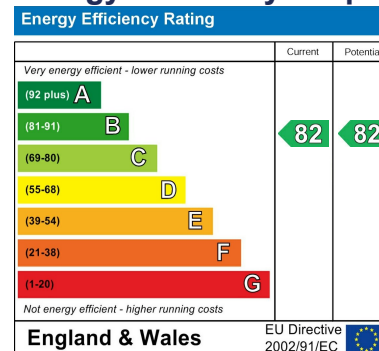
## Floor Plan



## Area Map



## Energy Efficiency Graph



These particulars, whilst believed to be accurate are set out as a general outline only for guidance and do not constitute any part of an offer or contract. Intending purchasers should not rely on them as statements of representation of fact, but must satisfy themselves by inspection or otherwise as to their accuracy. No person in this firm's employment has the authority to make or give any representation or warranty in respect of the property.

### Finchley Branch

181a Squires Lane,  
Finchley,  
London N3 2QS  
Tel 020 8343 2111

### Hendon Branch

16 Central Circus Parade,  
Queens Road, Hendon,  
London NW4 3AS  
Tel 020 8202 0808

### Mill Hill Branch

7 Thornfield Parade,  
Holders Hill Road, Mill Hill,  
London NW7 1LN  
Tel 020 8349 3030

