

[www.squiresestates.co.uk](http://www.squiresestates.co.uk)  
SALES • LETTINGS • MANAGEMENT



## Austell Gardens, London, NW7 4PG

£3,250 Per Month -

A well-presented 4 bedroom 2 reception end of terrace townhouse with double garage. The ground floor comprises a guest toilet and reception room with parquet flooring leading to a new modern eat-in kitchen with access to a private garden. On the first floor, you have a large reception room and one of the double bedrooms with fitted wardrobes. On the 2nd floor, you have a lovely 4 piece bathroom suite and a further 3 bedrooms all with fitted wardrobes. Other benefits include double glazing throughout, new carpets, central heating, a combination boiler and off-street parking for 2 cars.

Located just off March Lane with easy access to the A1, M1, A406 and close proximity to Mill Hill County and Courtland schools.

Offered unfurnished and available early August.

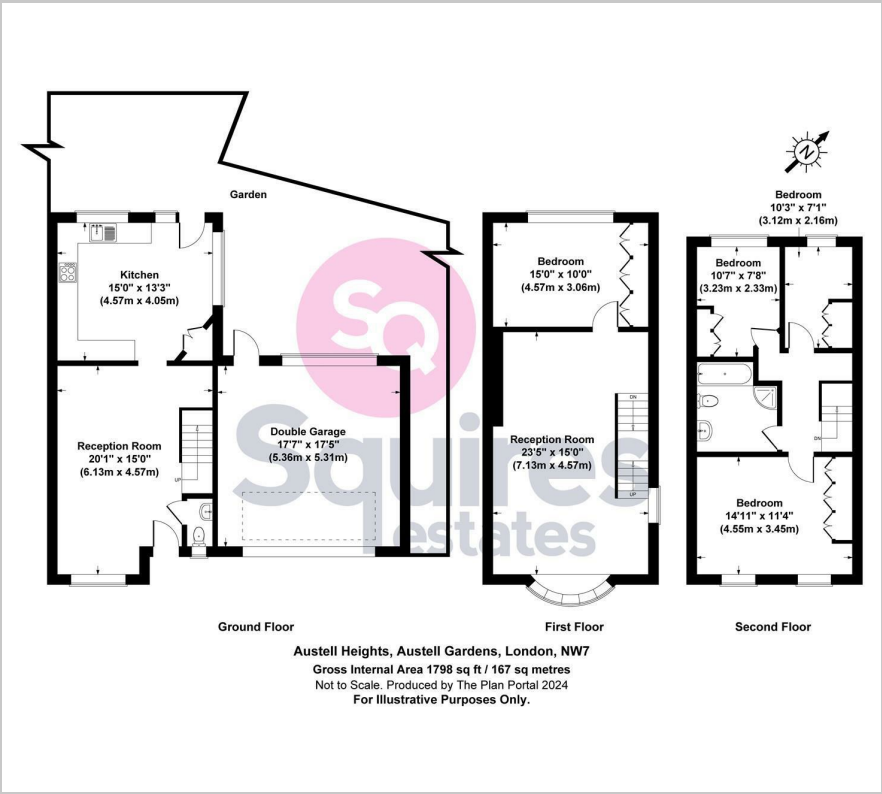
Barnet council tax F  
Deposit £3750.00

- 4 Bedroom Townhouse
- Council tax band F
- Guest W/C
- Off street parking
- Double garage
- New, modern eat in kitchen
- Central heating
- Private garden
- Unfurnished
- Available 6th August





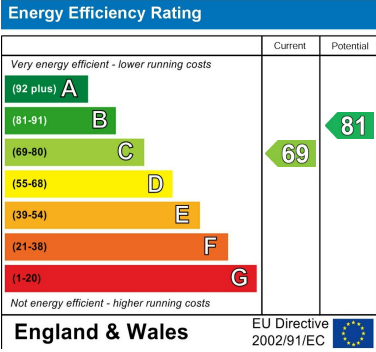
Floor Plan



Area Map



Energy Efficiency Graph



These particulars, whilst believed to be accurate are set out as a general outline only for guidance and do not constitute any part of an offer or contract. Intending purchasers should not rely on them as statements of representation of fact, but must satisfy themselves by inspection or otherwise as to their accuracy. No person in this firm's employment has the authority to make or give any representation or warranty in respect of the property.