



Neale Close, London, N2 0LE

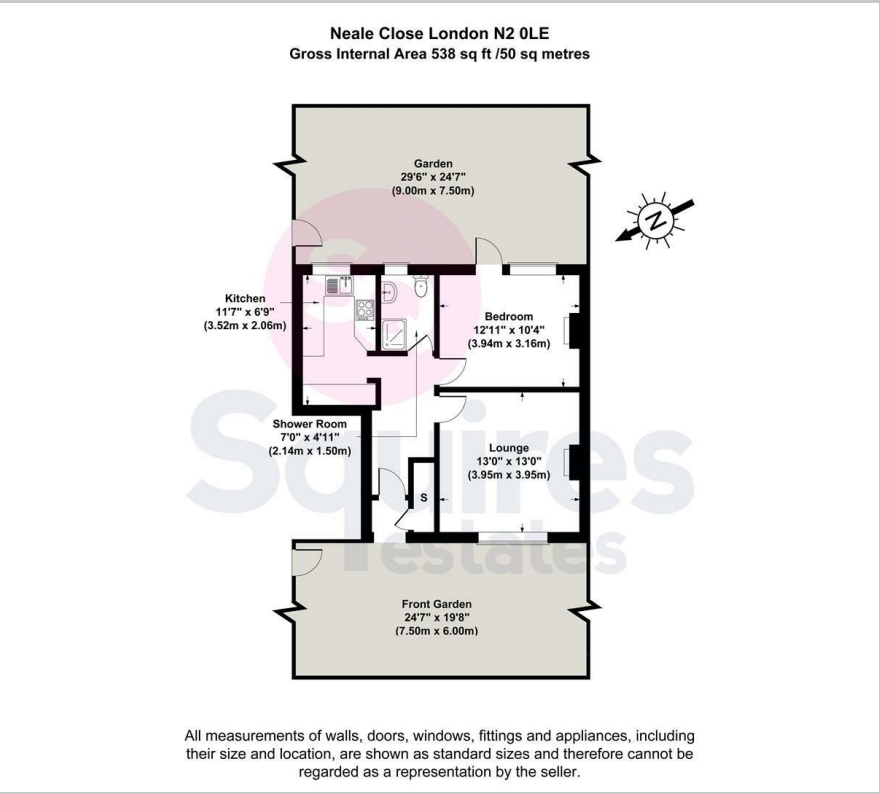
Offers In Excess Of £400,000 - Leasehold - Share of Freehold

****CHAIN FREE**** A charming 1 bedroom ground floor maisonette situated on the North side of Hampstead Garden Suburb. Benefits include private front and rear gardens, parquet flooring and a private entrance. The property is well located for a parade of shops and would make an ideal first time purchase or rental investment.

Share of Freehold with lease of approx. 972 years
Service Charge: £826.60 per annum inclusive of building insurance

- Purpose built maisonette
- 1 bedroom
- Private front and rear gardens
- Parquet flooring
- Chain free
- Private entrance
- Close to shops
- Barnet council tax band C

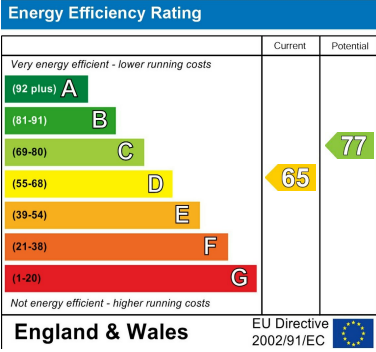
Floor Plan



Area Map



Energy Efficiency Graph



These particulars, whilst believed to be accurate are set out as a general outline only for guidance and do not constitute any part of an offer or contract. Intending purchasers should not rely on them as statements of representation of fact, but must satisfy themselves by inspection or otherwise as to their accuracy. No person in this firm's employment has the authority to make or give any representation or warranty in respect of the property.