

www.squiresestates.co.uk
SALES • LETTINGS • MANAGEMENT



St. Mary's Avenue, Finchley, N3 1SW

£2,800 Per Week -

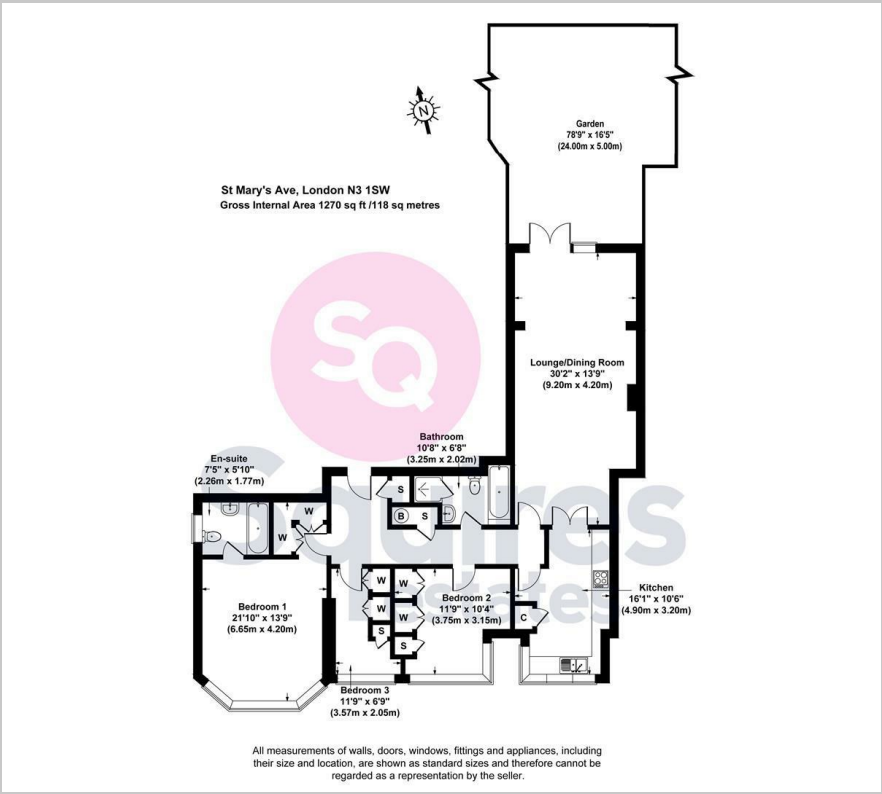
A stunning 3 bedroom ground floor period converted flat located on this quiet road off Hendon Lane. High ceilings throughout. Large reception room with wooden flooring. Good sized modern kitchen. Large main bedroom with lovely en suite. Small double bedroom. Single bedroom with excellent storage. Family bathroom. Reception room leads out to a lovely private rear patio/garden which in turn leads to a huge communal garden. One allocated off street parking space. Available early August, part furnished.

Barnet council tax band F
Deposit £3,230.76

- 3 Bedrooms
- Ground floor
- Private garden
- Communal garden
- Off street parking space
- Council tax band F
- Part furnished
- Available early August



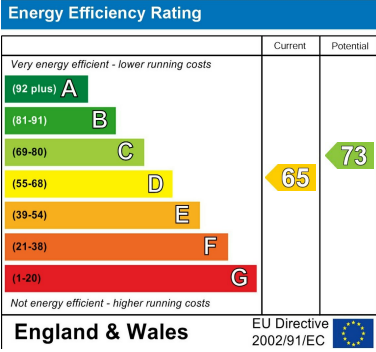
Floor Plan



Area Map



Energy Efficiency Graph



These particulars, whilst believed to be accurate are set out as a general outline only for guidance and do not constitute any part of an offer or contract. Intending purchasers should not rely on them as statements of representation of fact, but must satisfy themselves by inspection or otherwise as to their accuracy. No person in this firms employment has the authority to make or give any representation or warranty in respect of the property.