



## Tenterden Grove, London, NW4 1TL

£475,000 - Leasehold - Share of Freehold

**\*\*CHAIN FREE\*\*** This delightful two bedroom flat boasts a spacious 1,076 sq ft of living space, perfect for those seeking a flat that they can update and modernise to their own tastes. Situated in Edinburgh House a purpose-built development, this property is offered with a share of freehold.

The property features a large reception room, ideal for relaxing or entertaining guests. Separate kitchen, family bathroom and separate guest wc, two double bedrooms offering ample space for a small family, guests, or even a home office. A lift within the building adds to the convenience. Visitor parking and a garage, offering additional storage space or secure parking for your vehicle.

Tenterden Grove ensures easy access to local amenities, transport links, and green spaces, making it a desirable place to call home.

Contact Squires Estates today to arrange a viewing and take the first step towards making this flat your new home.

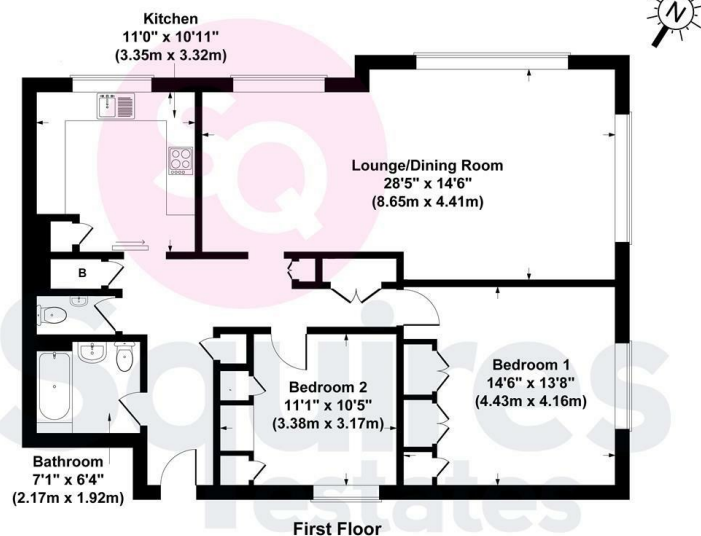
Share of Freehold with 943 years remaining  
Ground Rent: n/a  
Service Charge: Approx. £3000 per annum  
Barnet Council Tax Band E

- Chain Free
- 1,076 square feet of living space
- Share of Freehold
- Great Location
- Two Double Bedrooms
- Spacious Reception Room
- Separate Kitchen
- Family Bathroom & Guest WC
- Lift & Garage
- Barnet Council Tax Band E



## Floor Plan

Edinburgh House, Tenterden Grove London, NW4 1TL  
Gross Internal Area 1076 sq ft / 100 sq metres

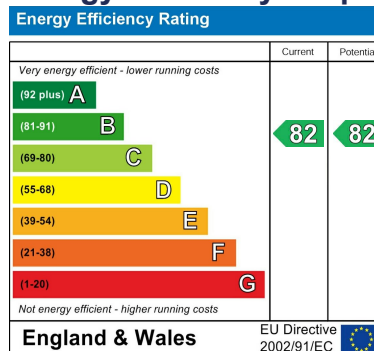


All measurements of walls, doors, windows, fittings and appliances, including their size and location, are shown as standard sizes and therefore cannot be regarded as a representation by the seller.

## Area Map



## Energy Efficiency Graph



These particulars, whilst believed to be accurate are set out as a general outline only for guidance and do not constitute any part of an offer or contract. Intending purchasers should not rely on them as statements of representation of fact, but must satisfy themselves by inspection or otherwise as to their accuracy. No person in this firm's employment has the authority to make or give any representation or warranty in respect of the property.

### Finchley Branch

181a Squires Lane,  
Finchley,  
London N3 2QS  
Tel 020 8343 2111

### Hendon Branch

16 Central Circus Parade,  
Queens Road, Hendon,  
London NW4 3AS  
Tel 020 8202 0808

### Mill Hill Branch

7 Thornfield Parade,  
Holders Hill Road, Mill Hill,  
London NW7 1LN  
Tel 020 8349 3030

