

www.squiresestates.co.uk
SALES • LETTINGS • MANAGEMENT



Rowsley Avenue, London, NW4 1AP

£1,100,000 - Freehold

Exceptional 6-Bedroom Family Home for Sale

Located on one of the area's most desirable roads, this beautifully presented six-bedroom semi-detached home offers spacious living, a stylish modern interior, and a stunning west-facing landscaped garden.

With over 2,000 sq ft of thoughtfully arranged accommodation, the property features three bright and versatile reception rooms, perfect for both family life and entertaining. The expansive contemporary kitchen diner overlooks the immaculate rear garden, ideal for relaxed afternoons and al fresco dining.

Upstairs, there are six generously sized bedrooms and three sleek, modern bathrooms, offering comfort and practicality throughout.

The impressive garden includes two sheds—one currently used as a workshop—enhancing the functionality of the outdoor space.

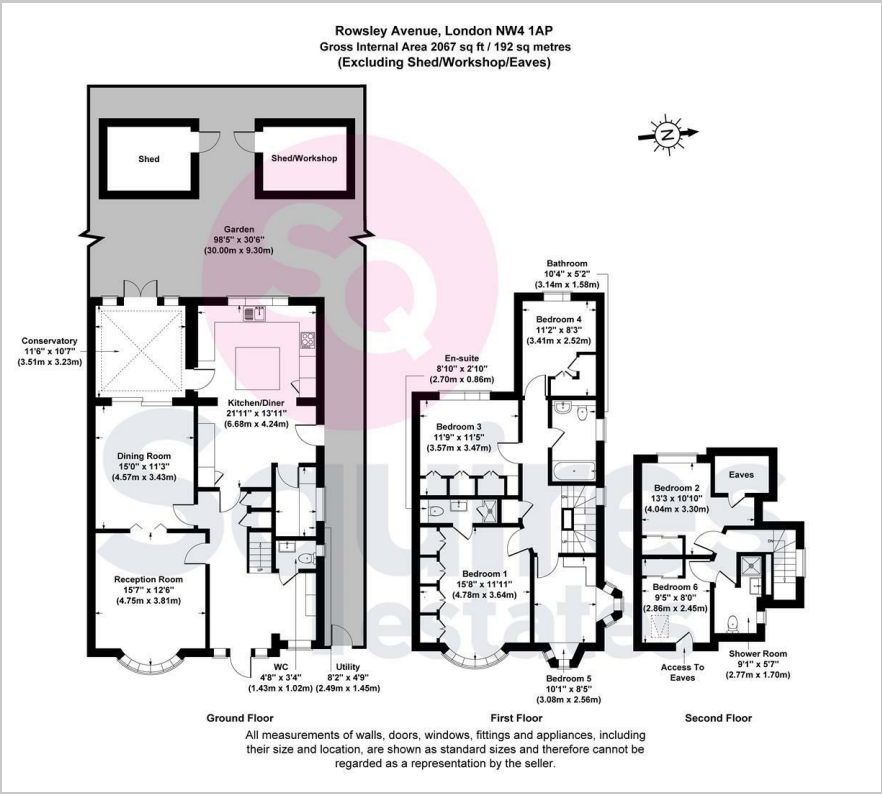
This is a rare opportunity to purchase a substantial family home in a premier location. Early viewing is strongly recommended.

Contact Squires Estates today to arrange a viewing.

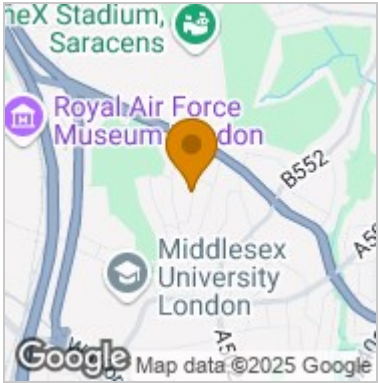
- **Exceptional Property**
- **6 Bedrooms**
- **Family Home**
- **Over 2,000 sq ft**
- **Three Bright & Spacious Reception Rooms**
- **Large Contemporary Kitchen Diner**
- **West-facing Landscaped Garden**
- **Three Bathrooms**
- **Off Street Parking for 2 Cars**
- **Barnet Council Tax Band F**



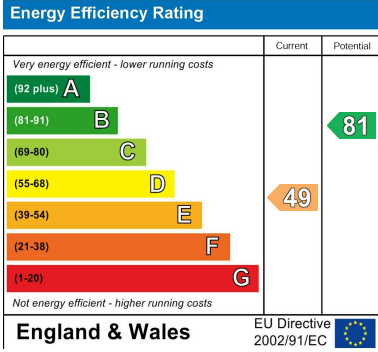
Floor Plan



Area Map



Energy Efficiency Graph



These particulars, whilst believed to be accurate are set out as a general outline only for guidance and do not constitute any part of an offer or contract. Intending purchasers should not rely on them as statements of representation of fact, but must satisfy themselves by inspection or otherwise as to their accuracy. No person in this firms employment has the authority to make or give any representation or warranty in respect of the property.