

www.squiresestates.co.uk
SALES • LETTINGS • MANAGEMENT



Nether Street, London, N12 8AB

£2,400 Per Month -

A beautiful and very spacious 2 double bedroom apartment taking up the entire Ground floor of this lovely period converted building set back from Nether Street. High ceilings and original features throughout. Huge modern eat in kitchen. Modern family bathroom and separate WC. Large hallway. Private rear patio. New front off street parking for multiple cars. Unfurnished and available immediately.

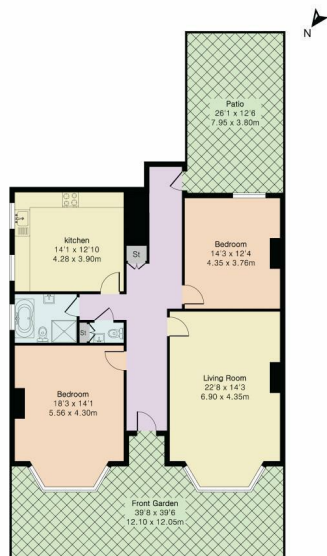
Barnet council tax band D
Deposit £2769.23

- Very large flat
- High ceilings
- 2 double bedrooms
- Ample off street parking
- Private patio area
- Excellent condition
- Barnet council tax band D
- Unfurnished



Floor Plan

Approximate Gross Internal Area 1224 sq ft - 114 sq m



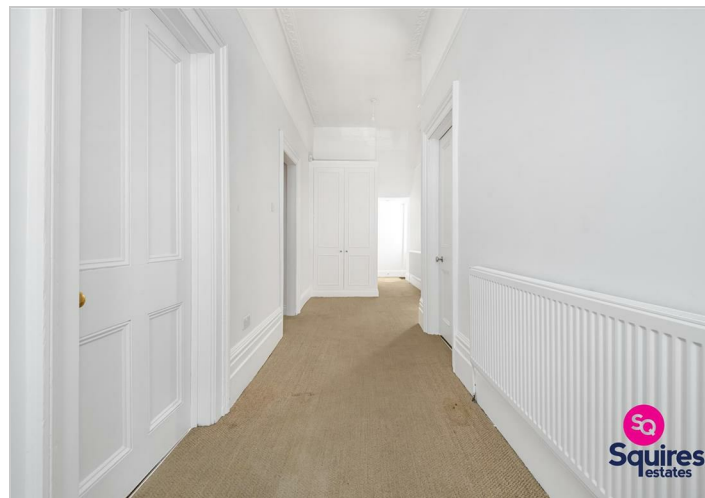
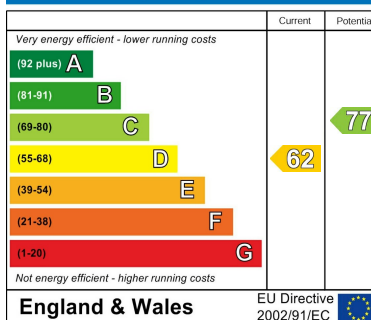
Ground Floor

Area Map



Energy Efficiency Graph

Energy Efficiency Rating



These particulars, whilst believed to be accurate are set out as a general outline only for guidance and do not constitute any part of an offer or contract. Intending purchasers should not rely on them as statements of representation of fact, but must satisfy themselves by inspection or otherwise as to their accuracy. No person in this firm's employment has the authority to make or give any representation or warranty in respect of the property.

Finchley Branch

181a Squires Lane,
Finchley,
London N3 2QS
Tel 020 8343 2111

Hendon Branch

16 Central Circus Parade,
Queens Road, Hendon,
London NW4 3AS
Tel 020 8202 0808

Mill Hill Branch

7 Thornfield Parade,
Holders Hill Road, Mill Hill,
London NW7 1LN
Tel 020 8349 3030

