

[www.squiresestates.co.uk](http://www.squiresestates.co.uk)  
SALES • LETTINGS • MANAGEMENT



## Church Crescent, London, N3 1BE

£4,700 Per Week -

A substantial and beautifully presented 5 bedroom semi detached house located on this quiet road close to the heart of Finchley Central. The property offers incredible original features throughout and highlights include a beautiful entrance hallway, high ceilings and ample downstairs space. Two front reception rooms, one dining room leading into a conservatory and an eat in kitchen. Downstairs WC. Two upstairs bathrooms. Lovely rear garden. Offered unfurnished and available immediately.

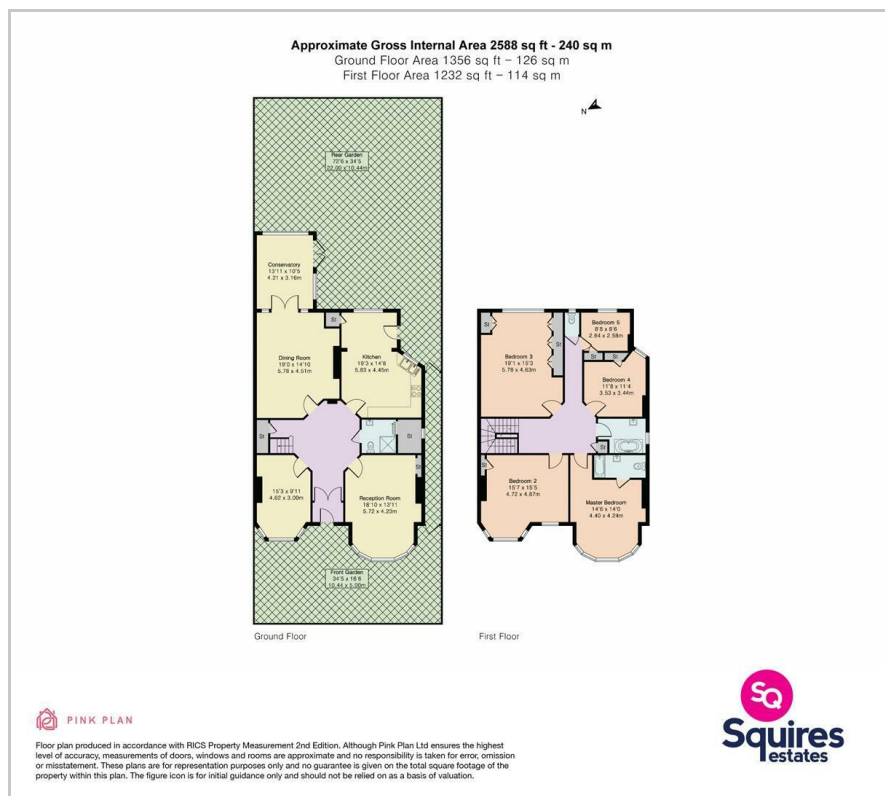
Deposit £5,423  
Council tax band G

- 5 Bedrooms
- Beautifully presented
- Original features
- Great location
- 4 receptions including conservatory
- 3 bathrooms (1 en-suite)
- Diarmuid Gavin designed garden
- Unfurnished
- Available immediately
- Barnet council tax band G





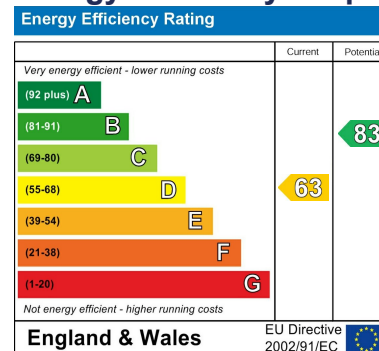
## Floor Plan



## Area Map



## Energy Efficiency Graph



These particulars, whilst believed to be accurate are set out as a general outline only for guidance and do not constitute any part of an offer or contract. Intending purchasers should not rely on them as statements of representation of fact, but must satisfy themselves by inspection or otherwise as to their accuracy. No person in this firm's employment has the authority to make or give any representation or warranty in respect of the property.

### Finchley Branch

181a Squires Lane,  
 Finchley,  
 London N3 2QS  
 Tel 020 8343 2111

### Hendon Branch

16 Central Circus Parade,  
 Queens Road, Hendon,  
 London NW4 3AS  
 Tel 020 8202 0808

### Mill Hill Branch

7 Thornfield Parade,  
 Holders Hill Road, Mill Hill,  
 London NW7 1LN  
 Tel 020 8349 3030

