



## Church Crescent, London, N3 1BE

£1,800,000 - Freehold

**\*\*CHAIN FREE\*\*** Nestled in the charming Church Crescent in Finchley Central, this exquisite double fronted semi-detached house offers a splendid blend of original features and modern living. Spanning an impressive 2500 square feet, this property boasts 3 spacious reception rooms plus a conservatory and a 19ft kitchen/diner, providing ample space for both relaxation and entertaining. The 5 bedrooms ensure that there is plenty of room for family and guests alike, while the three bathrooms (1 en-suite) add a touch of convenience to daily life.

Built in 1920, this home retains its character and charm, showcasing delightful original features that add to its appeal. The landscaped garden (designed by Diarmuid Gavin) is a true highlight, offering a serene outdoor space perfect for enjoying the fresh air or hosting gatherings with friends and family.

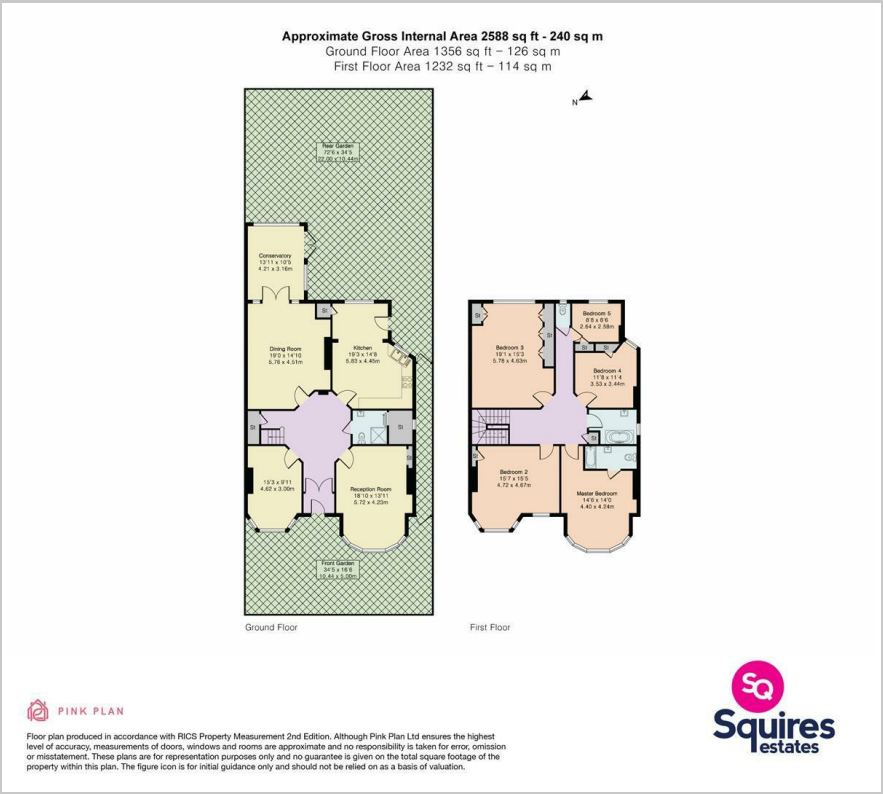
Conveniently located close to the Tube, commuting to central London and beyond is a breeze, making this property ideal for those who seek both comfort and accessibility. Additionally, being chain free simplifies the buying process, allowing for a smoother transition into your new home.

This property presents a rare opportunity to acquire a spacious family home in a desirable location, combining traditional elegance with modern convenience. Do not miss the chance to make this remarkable house your own.

- Double fronted semi-detached
- 5 Bedrooms
- 4 receptions including conservatory
- 3 bathrooms (1 en-suite)
- Diarmuid Gavin designed garden
- Close to Tube
- Original features
- Chain free
- 2500 sq ft
- Barnet council tax band G



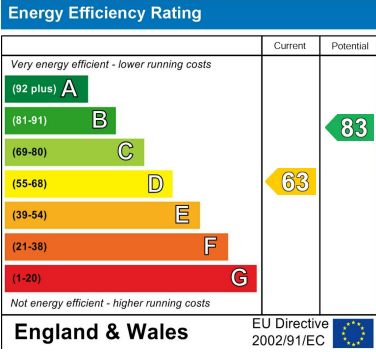
Floor Plan



Area Map



Energy Efficiency Graph



These particulars, whilst believed to be accurate are set out as a general outline only for guidance and do not constitute any part of an offer or contract. Intending purchasers should not rely on them as statements of representation of fact, but must satisfy themselves by inspection or otherwise as to their accuracy. No person in this firm's employment has the authority to make or give any representation or warranty in respect of the property.