

www.squiresestates.co.uk
SALES • LETTINGS • MANAGEMENT



Manor Park Road, London, N2 0SN

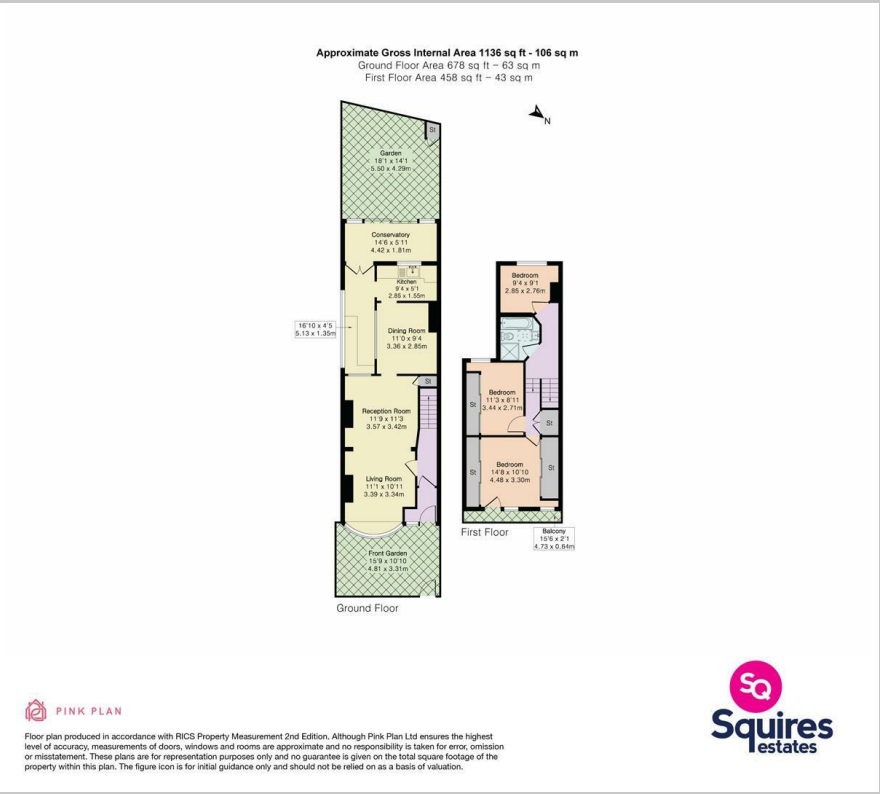
£725,000 - Freehold

A three-bedroom terraced family home offered chain-free and in need of modernisation. Located within close proximity of a range of schooling options including; Bishop Douglass School, The Archer Academy and Holy Trinity School. The property is approximately 0.8 miles to East Finchley Underground Station and East Finchley High Road which offers a range of shops and restaurants while being within close proximity to local bus routes. The property also has potential to extend (subject to the necessary consents) and no onward chain.

- Terraced House
- 3 Bedrooms
- 4 Receptions
- Chain free
- In need of modernisation
- Close to Schools
- 0.8 miles from east Finchley Station
- Barnet council tax band
- Potential to extend (STPP)



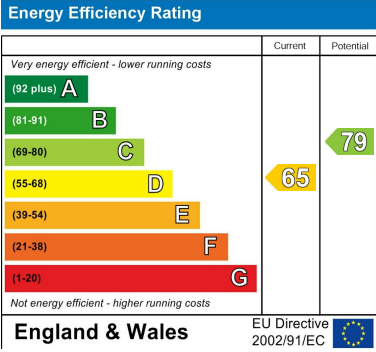
Floor Plan



Area Map



Energy Efficiency Graph



These particulars, whilst believed to be accurate are set out as a general outline only for guidance and do not constitute any part of an offer or contract. Intending purchasers should not rely on them as statements of representation of fact, but must satisfy themselves by inspection or otherwise as to their accuracy. No person in this firms employment has the authority to make or give any representation or warranty in respect of the property.