



Abingdon Road, Finchley, N3 2RH

£2,000 Per Month -

Stunning modern ground floor flat offering 2 double bedrooms and direct access to a private garden. Recently refurbished with wooden flooring throughout. Lovely modern open plan kitchen and a modern bathroom. Offered unfurnished and available 13th October.

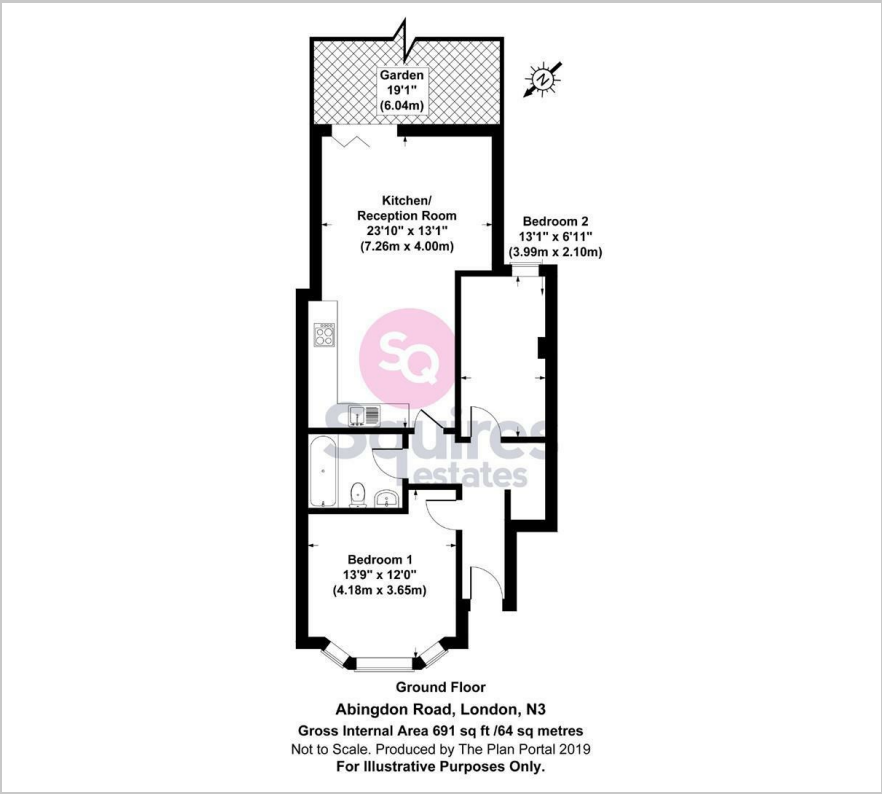
Council Tax Band C

Deposit £2307.69

- Two double bedrooms
- Ground floor
- Private garden
- Recently refurbished
- Wooden flooring
- Open plan kitchen
- Available 13th October
- Unfurnished



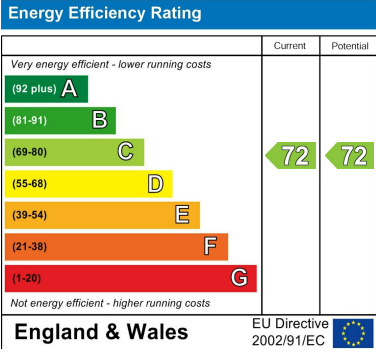
Floor Plan



Area Map



Energy Efficiency Graph



These particulars, whilst believed to be accurate are set out as a general outline only for guidance and do not constitute any part of an offer or contract. Intending purchasers should not rely on them as statements of representation of fact, but must satisfy themselves by inspection or otherwise as to their accuracy. No person in this firms employment has the authority to make or give any representation or warranty in respect of the property.

Finchley Branch

181a Squires Lane,
Finchley,
London N3 2QS
Tel 020 8343 2111

Hendon Branch

16 Central Circus Parade,
Queens Road, Hendon,
London NW4 3AS
Tel 020 8202 0808

Mill Hill Branch

7 Thornfield Parade,
Holders Hill Road, Mill Hill,
London NW7 1LN
Tel 020 8349 3030

