



Woodside Lane, London, N12 8QH

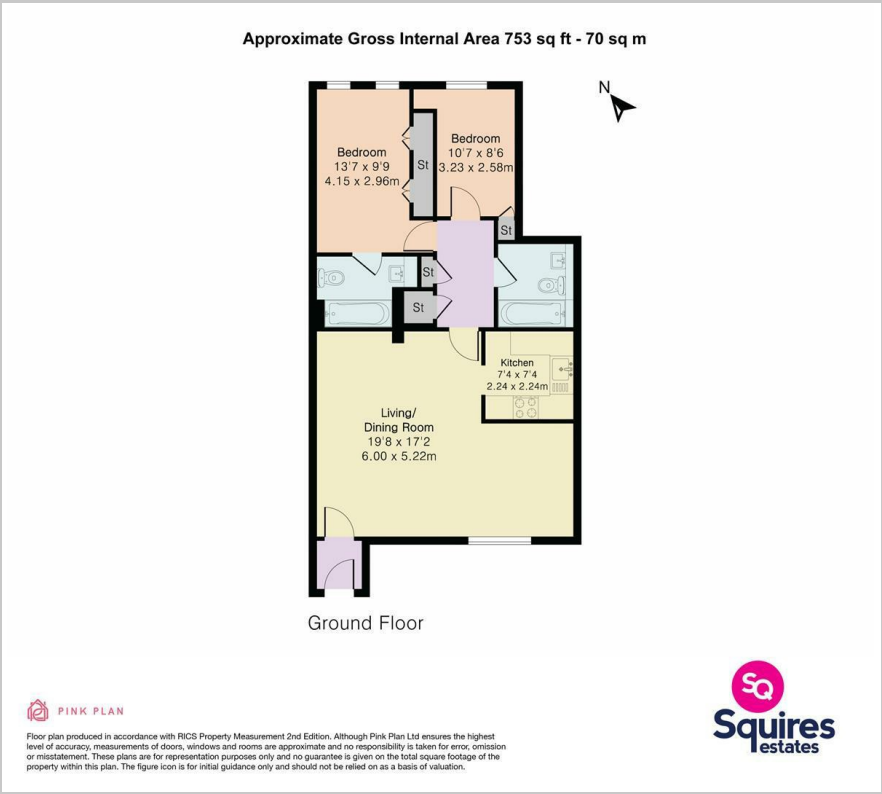
£1,950 Per Week -

Squires Estates is pleased to present this two-bedroom ground floor apartment. The property is situated in close proximity to the local amenities of North Finchley High Road, just 0.6 miles from Woodside Park Underground station and 0.8 miles from Totteridge and Whetstone Underground station. The apartment comprises a large semi-open-plan living room with a newly fitted kitchen, a family bathroom, a spacious double bedroom with built-in wardrobes and an en-suite, and a second smaller double bedroom. Additional benefits include off-street parking and a private entrance. Offered unfurnished and available from October 1st.

- Two bedrooms
- Well presented
- Own entrance
- 0.6 miles from Woodside Park Tube
- Off street parking
- En-suite
- Unfurnished
- Available from October 1st
- Council tax band E

Deposit: £2250
Barnet Council: Tax Band E

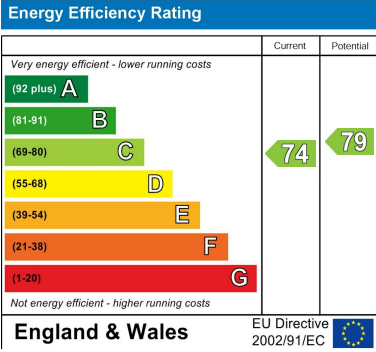
Floor Plan



Area Map



Energy Efficiency Graph



These particulars, whilst believed to be accurate are set out as a general outline only for guidance and do not constitute any part of an offer or contract. Intending purchasers should not rely on them as statements of representation of fact, but must satisfy themselves by inspection or otherwise as to their accuracy. No person in this firms employment has the authority to make or give any representation or warranty in respect of the property.