



Peacock Close, Mill Hill, NW7 1LF

£450,000 - Leasehold

****CHAIN FREE**** A very well presented 764 sq ft, 2 double bedroom, 2 bathroom (1 en-suite) apartment situated on the ground floor of this modern purpose built block within the ever popular Millbrook Park development. The property features an 18ft reception/dining room with direct access to an almost unique and private, approx. 40ft paved GARDEN area. Further benefits include a separate kitchen with integrated appliances, fitted wardrobes to the master bedroom and 1 secure, underground parking space. The flat is very well located for Mill Hill East Tube station and would suit both first time buyers and those looking to downsize.

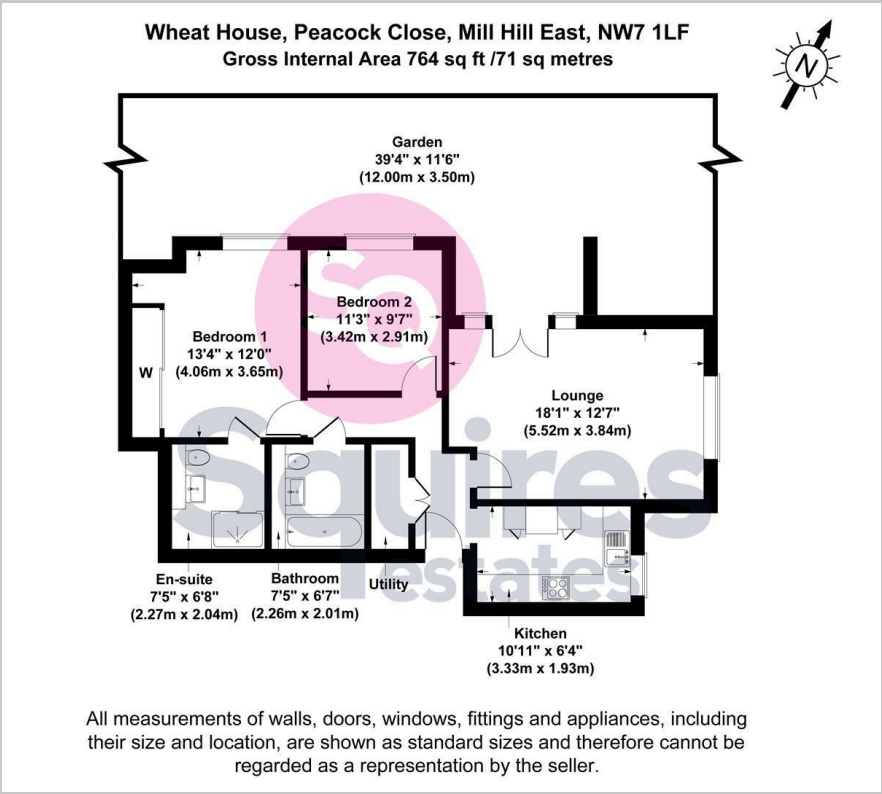
Lease: Approx. 232 years

Ground Rent: £300 per annum

Service Charge: Approx. £3500 per annum inclusive of reserve fund contribution

- Purpose built
- 2 double bedrooms
- 2 bathrooms (1 en-suite)
- Large private garden area
- 1 underground parking space
- Chain free
- Ideal first time purchase
- Barnet council tax band E

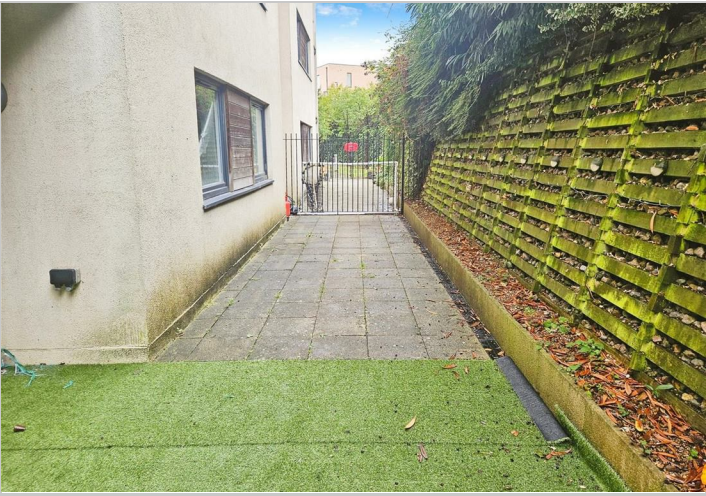
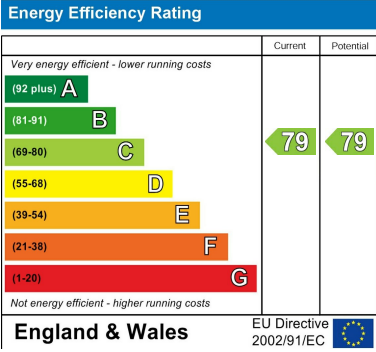
Floor Plan



Area Map



Energy Efficiency Graph



These particulars, whilst believed to be accurate are set out as a general outline only for guidance and do not constitute any part of an offer or contract. Intending purchasers should not rely on them as statements of representation of fact, but must satisfy themselves by inspection or otherwise as to their accuracy. No person in this firms employment has the authority to make or give any representation or warranty in respect of the property.