

Princes Avenue, London, N3 2DA

£400,000 - Leasehold - Share of Freehold

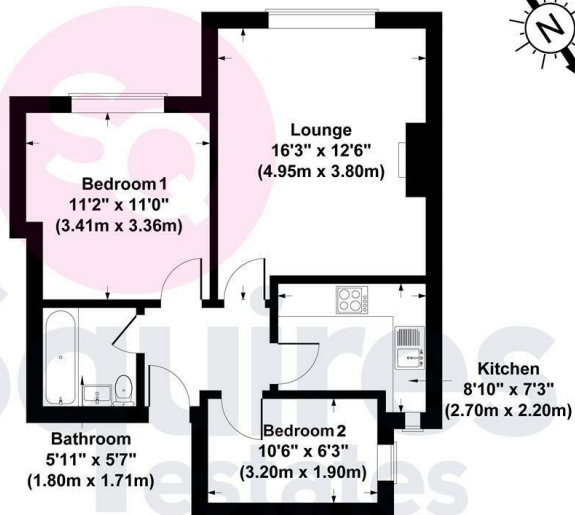
****CHAIN FREE**** A 2 bedroom flat situated on the first floor of this Edwardian conversion. The property benefits from a 16ft South-West facing reception room with feature fireplace as well as a modern kitchen and bathroom. The flat is a short walk to Ballards Lane and only 0.4 miles from Finchley Central Tube station.

Share of Freehold with a new lease of over 900 years

- Conversion
- 2 bedrooms
- 16ft reception room
- Chain free
- Close to shops
- Close to Tube
- Modern kitchen and bathroom
- Barnet council tax band C

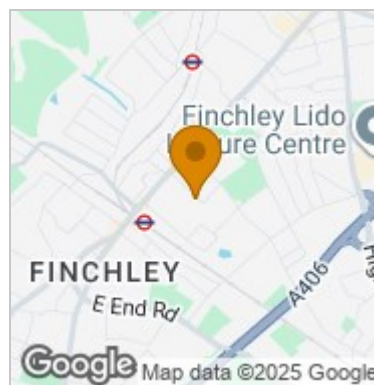
Floor Plan

Princes Avenue, N3 2DA
Gross Internal Area 538 sq ft / 50 sq meters

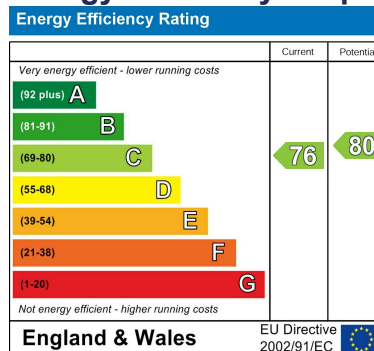


All measurements of walls, doors, windows, fittings and appliances, including their size and location, are shown as standard sizes and therefore cannot be regarded as a representation by the seller.

Area Map



Energy Efficiency Graph



These particulars, whilst believed to be accurate are set out as a general outline only for guidance and do not constitute any part of an offer or contract. Intending purchasers should not rely on them as statements of representation of fact, but must satisfy themselves by inspection or otherwise as to their accuracy. No person in this firm's employment has the authority to make or give any representation or warranty in respect of the property.

Finchley Branch

181a Squires Lane,
Finchley,
London N3 2QS
Tel 020 8343 2111

Hendon Branch

16 Central Circus Parade,
Queens Road, Hendon,
London NW4 3AS
Tel 020 8202 0808

Mill Hill Branch

7 Thornfield Parade,
Holders Hill Road, Mill Hill,
London NW7 1LN
Tel 020 8349 3030

