



Hillside Grove, London, NW7 2LS

£1,150,000 - Freehold

A fantastic 4 bedroom, 3 bathroom double fronted semi-detached house situated within this quiet turning in Mill Hill. The property has been extended considerably and features a lovely 24ft L-shaped kitchen/dining/living room with bi-folding doors out to a charming patio and garden. Further benefits include a separate front reception room, a 27ft second kitchen/utility room, a 16ft master bedroom with dressing area and en-suite shower room, a boarded loft, extensive storage space, a downstairs W.C. and 2 off street parking spaces. With its close proximity to multiple schools as well as Mill Hill Park, the house would make an ideal family home.

- Double fronted semi-detached
- 4 bedrooms
- 3 bathrooms (1 en-suite)
- Patio and garden
- 2 off street parking spaces
- Downstairs W.C.
- Second kitchen/utility room
- Barnet council tax band F



4



3

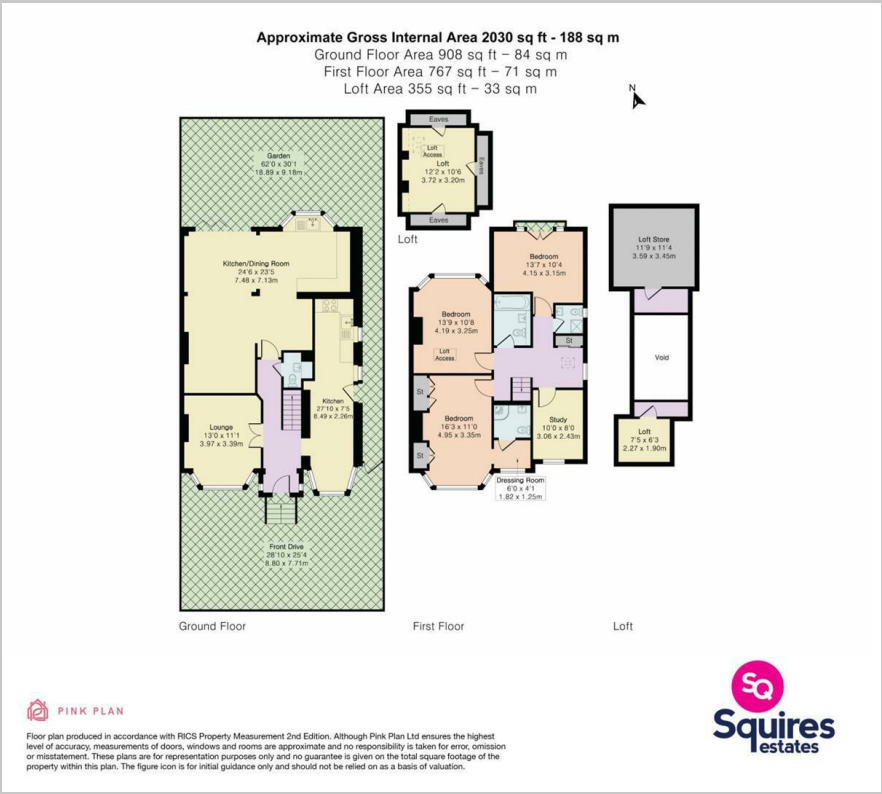


3



D

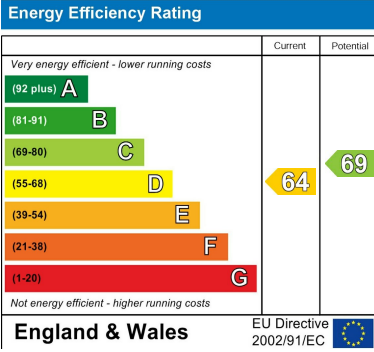
Floor Plan



Area Map



Energy Efficiency Graph



These particulars, whilst believed to be accurate are set out as a general outline only for guidance and do not constitute any part of an offer or contract. Intending purchasers should not rely on them as statements of representation of fact, but must satisfy themselves by inspection or otherwise as to their accuracy. No person in this firms employment has the authority to make or give any representation or warranty in respect of the property.