

Griffin Building, Regiment Hill – NW7

£475,000 Leasehold

****CHAIN FREE**** A fantastic 2 double bedroom, 2 en-suite bathroom (1 Jack and Jill) apartment situated on the ground floor of this modern purpose built block within the ever popular Millbrook Park development. Benefits include a West facing private terrace, a 21ft reception room with modern, fully integrated kitchen, a secure parking space and communal gardens. The flat is extremely well located for Mill Hill East Tube station.

Lease: Approx. 238 years

Ground Rent: £350 per annum

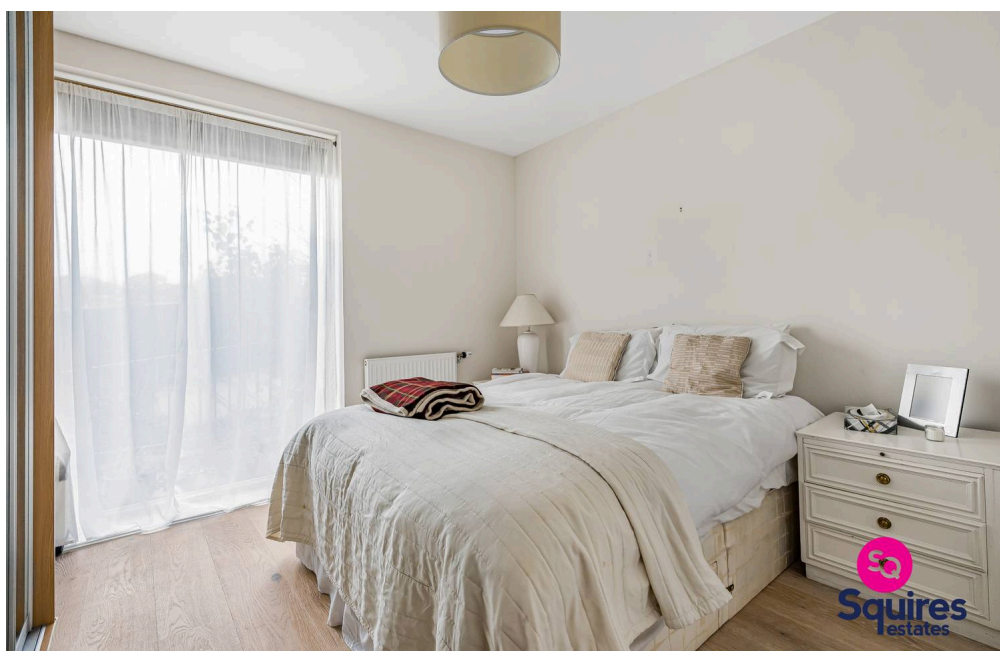
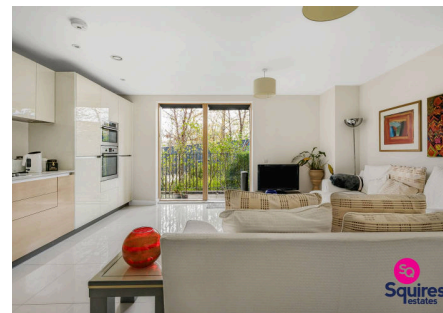
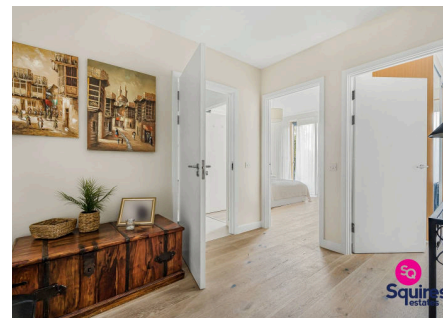
Service Charge: Approx. £4900 per annum

Council Tax band: E

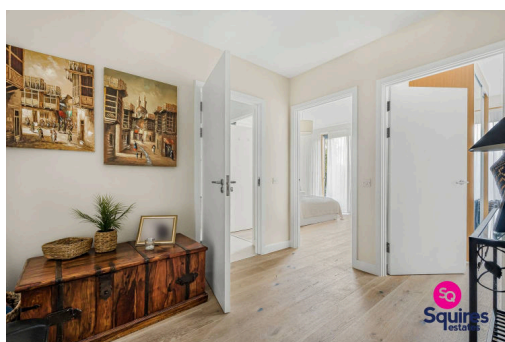
Tenure: Leasehold

EPC Energy Efficiency Rating: B

EPC Environmental Impact Rating: A

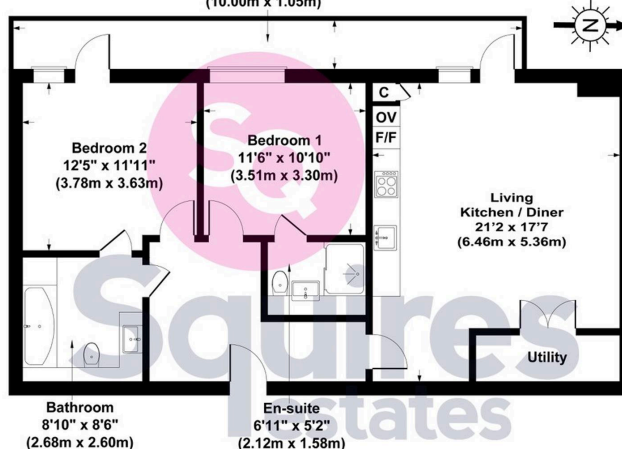


- Purpose built
- 2 double bedrooms
- 2 bathrooms
- West facing terrace
- Secure parking space
- Close to Tube
- Chain free
- Barnet council tax band E



Griffin Building, 7 Regiment Hill NW7 1FS
Gross Internal Area 904 sq ft / 84 sq metres

Balcony
32'10" x 3'5"
(10.00m x 1.05m)



All measurements of walls, doors, windows, fittings and appliances, including their size and location, are shown as standard sizes and therefore cannot be regarded as a representation by the seller.