



Honiton Gardens, London – NW7

£350,000 Leasehold

****CHAIN FREE**** A 2 bedroom apartment situated on the ground floor of this modern purpose built block within the ever popular Lidbury Square development. The property features a 14ft South facing reception room with Juliet balcony and further benefits include a built-in wardrobe to the master bedroom, communal gardens easily accessed to the rear and an allocated parking space. The flat is extremely well located for Mill Hill East Tube station, a Virgin Active gym and a Waitrose supermarket and would make an ideal first time purchase.

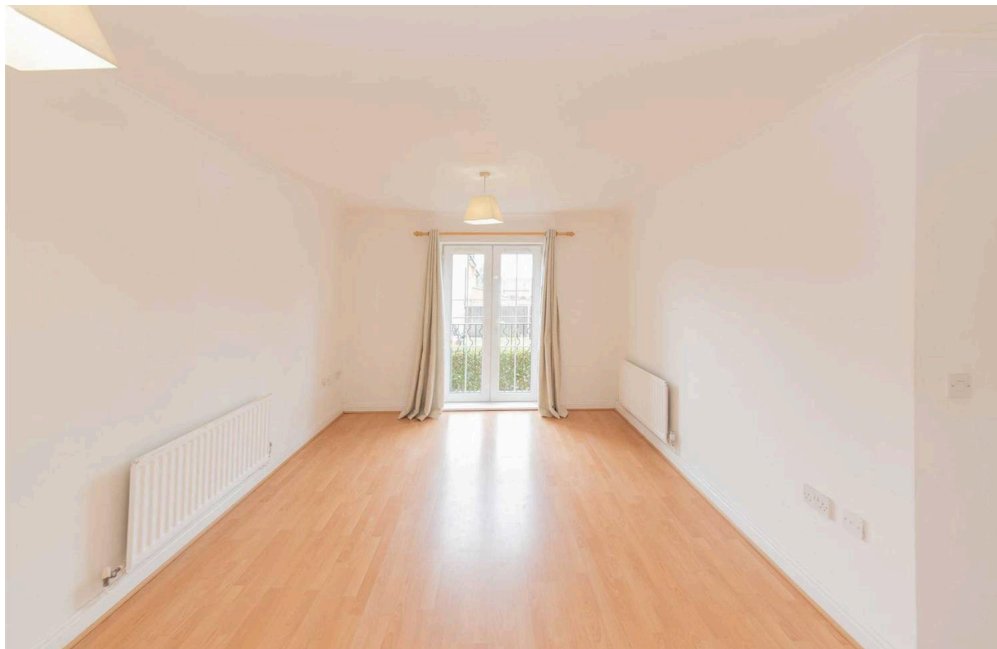
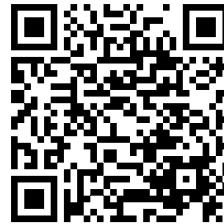
Lease: Approx. 973 years Ground Rent: £216 per annum Service Charge: Approx. £3323 per annum

Council Tax band: E

Tenure: Leasehold

EPC Energy Efficiency Rating: C

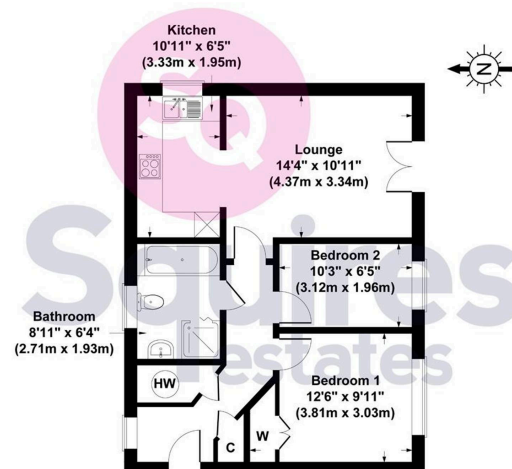
EPC Environmental Impact Rating:



- › Purpose built
- › 2 bedrooms
- › Off street parking
- › Close to Tube
- › Communal gardens
- › Gas central heating
- › Barnet council tax band E
- › Available now



Honiton Gardens, London, NW7 1GF
Gross Internal Area 603 sq ft / 56 sq metres



All measurements of walls, doors, windows, fittings and appliances, including their size and location, are shown as standard sizes and therefore cannot be regarded as a representation by the seller.