



Cornforth Lane - NW7

£635,000 Leasehold

CHAIN FREE A fantastic 2 double bedroom apartment situated on the ground (officially lower ground) floor of this purpose built block within the Ridgeway Views development. Set within 47 acres of beautiful grounds in Mill Hill Village, the property features a spacious open-plan kitchen and reception room with direct access to a large balcony looking towards Totteridge Valley. Further benefits include 2 en-suite bathrooms, a guest W.C., extensive storage, a passenger lift, a residents' gym, a concierge and 1 allocated parking space.

Lease: Approx. 991 years Ground Rent: Peppercorn Service Charge: Approx. £3600 per annum

Council Tax band: F

Tenure: Leasehold

EPC Energy Efficiency Rating: B

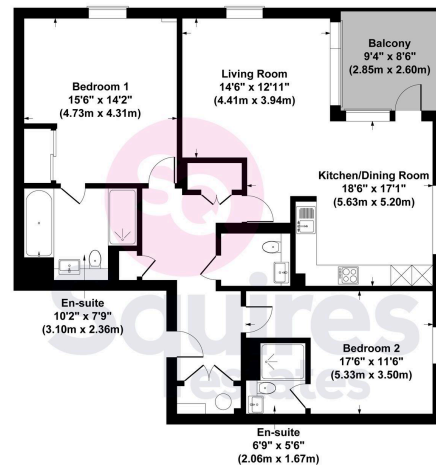
EPC Environmental Impact Rating:



- › Purpose built
- › 2 double bedrooms
- › 2 en-suites
- › Guest W.C.
- › Large balcony
- › 1 allocated parking space
- › Extensive storage
- › Lift
- › Gym and concierge
- › Chain free



Lush House, 12 Cornforth Lane NW7 1UD
Gross Internal Area 1152 sq ft / 107 sq metres



Lower Ground Floor

All measurements of walls, doors, windows, fittings and appliances, including their size and location, are shown as standard sizes and therefore cannot be regarded as a representation by the seller.