

219 Squires Lane, London – N3 2QS

£575,000 Freehold

A three-bedroom terraced house in need of total modernisation, available with no onward chain. The property features two reception rooms, a separate kitchen, 3 double bedrooms, a family bathroom, and a spacious southwest-facing garden.

The property also has the potential for extension (subject to consent), and it's ideal for buyers wishing to customise their home. The property is well located and is just a short walk to Finchley Central Underground Station, and also provides easy access to the M1, A1, and the North Circular. The property is also within close proximity to Victoria Park, Stephens House & Gardens, and several schools.

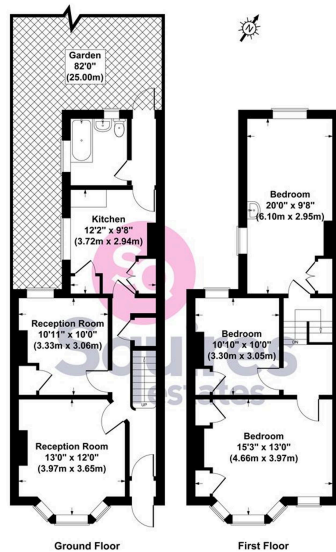
Barnet Council Tax Band:

Council Tax band: TBD

Tenure: Leasehold

EPC Energy Efficiency Rating: C

EPC Environmental Impact Rating: D



Squires Lane, London, N3
Gross Internal Area 1109 sq ft / 103 sq metres
Not to Scale. Produced by The Plan Portal 2025
For Illustrative Purposes Only.

- Terraced House
- 3 Bedrooms
- Chain free
- Unmodernised
- 2 reception rooms
- Close to Parks & Schools
- Great location
- potential for extension (subject to consent)

