



## Long Lane, London – N3

£410,000 Leasehold

*\*Chain Free\** A very well presented two bedroom ground floor flat in this purpose built block in the heart of Finchley Central. The apartment offers a 17' reception room and a private rear garden to the rear. Further benefits include a modern bathroom and separate WC, modern fully fitted kitchen, 2 good sized bedrooms and an allocated rear off street parking space. Long leasehold. Located a few moments from Victoria Park and a short walk from Finchley Central High Road.

Lease: Approximately 151 years remaining

Ground Rent: TBC

Service Charge – £1750 per annum

Council tax band C

Council Tax band: C

Tenure: Leasehold

EPC Energy Efficiency Rating: C

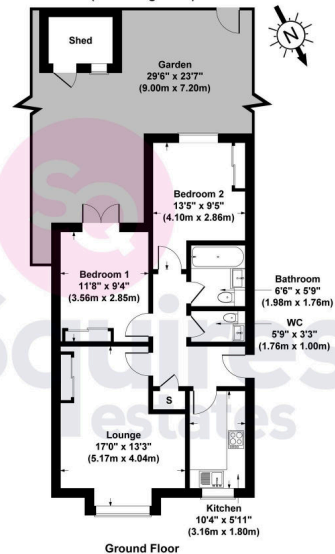
EPC Environmental Impact Rating: C



- › Two bedrooms
- › Ground floor
- › Private garden
- › Allocated parking space
- › Purpose built block
- › Chain free
- › Council tax band C
- › Great location



Long Lane N3 2HX  
Gross Internal Area 635 sq ft / 59 sq metres  
(Excluding Shed)



All measurements of walls, doors, windows, fittings and appliances, including their size and location, are shown as standard sizes and therefore cannot be regarded as a representation by the seller.