



Regency Crescent – NW4

£425,000 Leasehold

CHAIN FREE A 2 double bedroom, 2 bathroom apartment situated on the ground floor of this popular purpose built block. The property features a 17ft reception room with direct access to a private balcony and further benefits include a large master bedroom with fitted wardrobes and en-suite shower room, a near-12ft separate kitchen, a family bathroom and a garage. The flat would make an ideal first time purchase.

Lease: 179 years remaining

Ground Rent: N/A

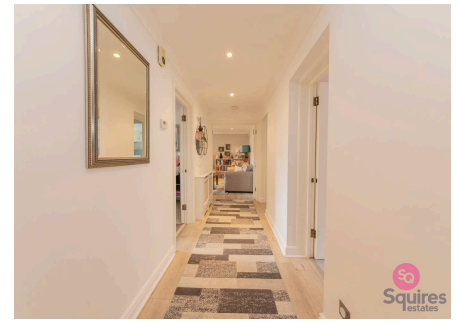
Service Charge: Approx. £3524

Council Tax band: F

Tenure: Leasehold

EPC Energy Efficiency Rating: C

EPC Environmental Impact Rating:



- Purpose built
- 2 bedrooms
- 2 bathrooms (1 en-suite)
- Balcony
- Garage
- Chain free
- 17ft reception
- Fitted wardrobes



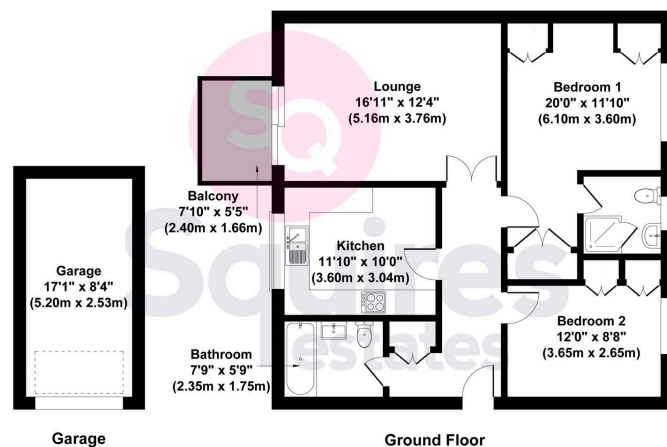
Windsor House, Regency Crescent NW4 1NW

Gross Internal Area

Flat 861 sq ft / 80 sq metres

Garage 140 sq ft / 13 sq metres

Total 1001 sq ft / 93 sq metres



All measurements of walls, doors, windows, fittings and appliances, including their size and location, are shown as standard sizes and therefore cannot be regarded as a representation by the seller.



www.squiresestates.co.uk