

Cromwell Close, London - N2

£530,000 Leasehold

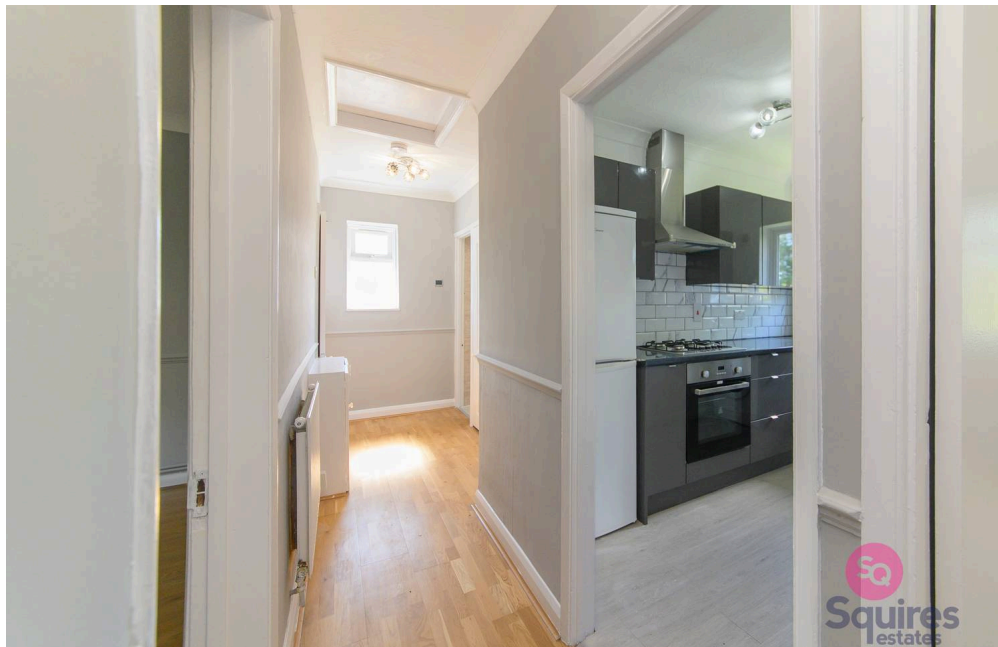
A very well presented 2 bedroom first floor maisonette situated within a quiet cul-de-sac location. Benefits include a bright rear facing reception room, 2 double bedrooms, a modern kitchen, a contemporary bathroom, a rear garden, wood flooring to most rooms, loft access, double glazing throughout and gas central heating. The flat is located within 0.5 mile of East Finchley Tube station and the High Road and would make an ideal first time purchase or rental investment.

Council Tax band: D

Tenure: Leasehold

EPC Energy Efficiency Rating: D

EPC Environmental Impact Rating:



- › Chain free
- › Maisonette
- › Private portion of garden
- › Separate kitchen
- › Own entrance
- › Gas central heating
- › Close to Underground
- › Newly decorated

