



Yarrow Apartments, Bittacy Hill – NW7 1TH

£2,350 pcm

A beautifully presented two-bedroom flat located in a highly sought-after location. Finished to an excellent standard throughout, the property boasts a bright and spacious open-plan living area, complemented by attractive wooden flooring that flows seamlessly into each room, creating a warm and inviting atmosphere. The modern kitchen is well-appointed with quality appliances, ample storage, and sleek work surfaces. Both bedrooms are generously sized, providing plenty of space for furnishings and personal touches, while large windows ensure an abundance of natural light. The contemporary bathroom features elegant fixtures and a clean and neutral design. Additional benefits include efficient heating, secure entry, and underground parking. Situated in a prime location, this property offers convenient access to a range of local amenities, including shops, cafes, and excellent transport links, ensuring everything you need is within easy reach.

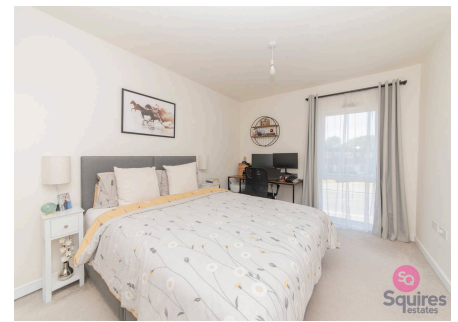
Offered part furnished and available from the 17th of June

Council Tax band: E

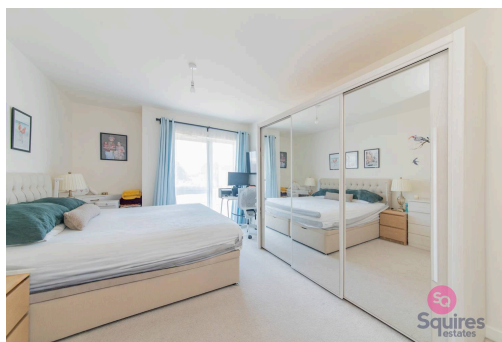
Tenure: Leasehold

EPC Energy Efficiency Rating: B

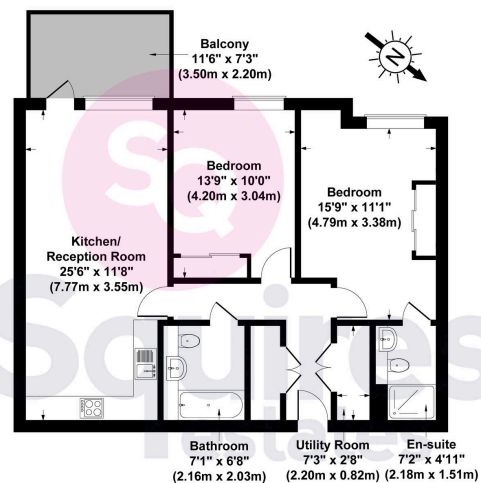
EPC Environmental Impact Rating: A



- 2 Double bedroom
- 2 bathrooms
- Purpose built
- Excellent condition
- Well located
- Underground parking
- Part furnished
- Balcony
- Available from the 17h of June



Yarrow Apartments, Bittacy Hill NW7 1TH
Gross Internal Area 850 sq ft / 79 sq metres



Ground Floor

All measurements of walls, doors, windows, fittings and appliances, including their size and location, are shown as standard sizes and therefore cannot be regarded as a representation by the seller.



www.squiresestates.co.uk