



Manor Drive, London – N20 0DZ

£865,000 Freehold

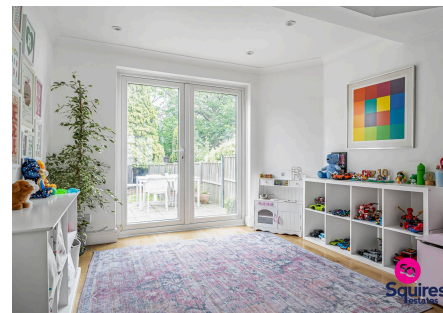
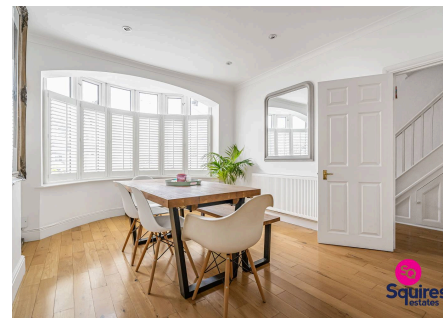
A fantastic 4 bedroom, 2 bathroom (1 en-suite) extended, terraced house situated within this popular turning in Whetstone. The property has been much improved by the current owners including a loft conversion and features a 37ft through-reception/dining room. Further benefits include a large garden with summerhouse, a modern kitchen and bathrooms, a downstairs W.C., plantation shutters and off street parking for 2 cars. With its convenient location for schools and shops as well as Friary Park and North Middlesex Golf Club, the house would make an ideal family home.

Council Tax band: E

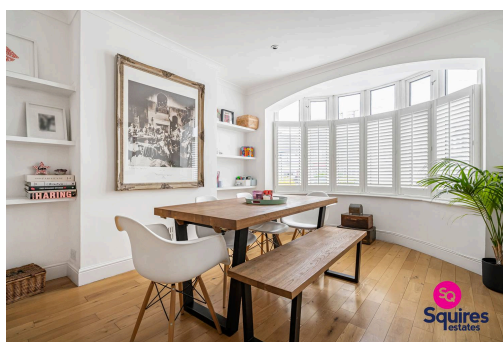
Tenure: Freehold

EPC Energy Efficiency Rating: D

EPC Environmental Impact Rating: E



- › Extended house
- › 4 bedrooms
- › 2 bathrooms (1 en-suite)
- › Garden
- › Downstairs W.C.
- › Off street parking
- › Large living space
- › Close to Friary Park and local shops



Approximate Gross Internal Area 1472 sq ft - 137 sq m
(Excluding Outbuilding)

Ground Floor Area 697 sq ft - 65 sq m

First Floor Area 517 sq ft - 48 sq m

Second Floor Area 258 sq ft - 24 sq m

Outbuilding Area 151 sq ft - 14 sq m

