

Basing Way, London – N3 3DB

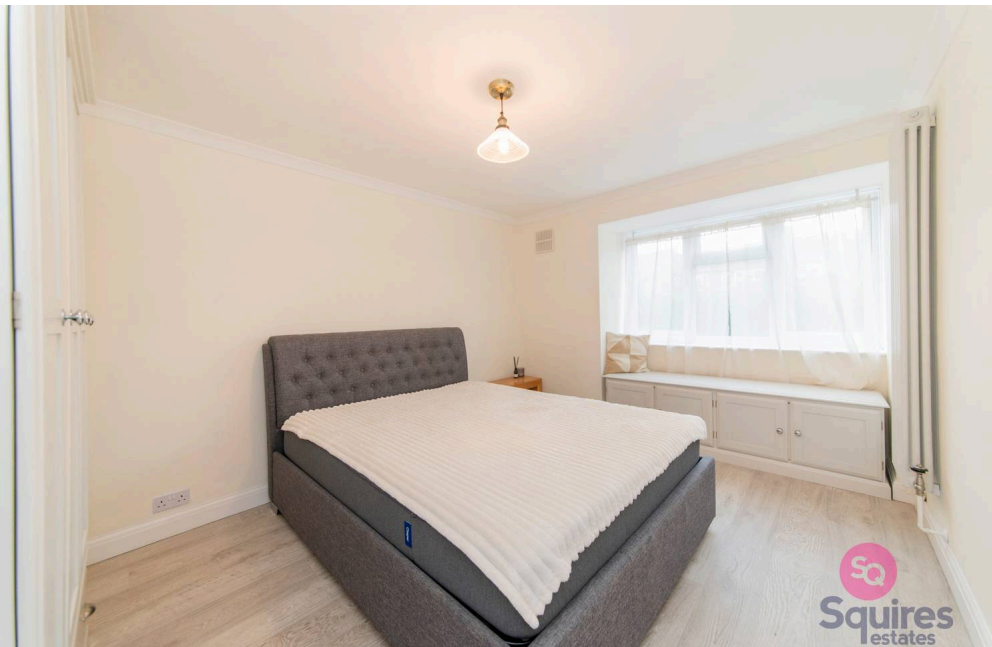
£350,000 Leasehold

A well presented two bedroom flat situated on the ground floor of this purpose built block originally built by the Local Authority. The property features a 14ft reception room and benefits include a 12ft modern kitchen, a 14ft bedroom with built-in wardrobe, double glazing throughout, gas central heating and 2 external secure storage cupboards. The flat is offered on a chain free basis and would make an ideal first time purchase or rental investment.

Council Tax band: C

Tenure: Leasehold

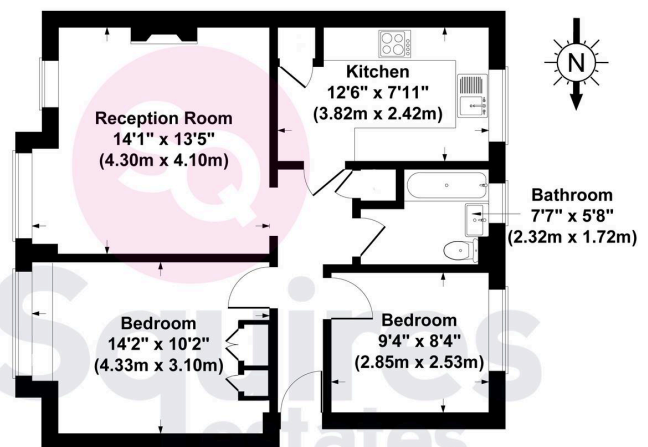
EPC Energy Efficiency Rating: C



- Two bedrooms
- Ground floor
- Modern kitchen and bathroom
- Chain Free
- Purpose built block
- Wooden flooring
- Two separate storage units
- Close to Finchley Central



27, Basing Way, Finchley, London N3 3DB
Gross Internal Area 624 sq ft / 58 sq metres



Ground Floor

All measurements of walls, doors, windows, fittings and appliances, including their size and location, are shown as standard sizes and therefore cannot be regarded as a representation by the seller.