

Homan Court, 17 Friern Watch Avenue – N12 9HW

£275,000 Leasehold

Quietly situated TWO BEDROOM warden assisted retirement flat on ground floor of modern purpose built block for the over 60's. Located in tree lined turning, close to shops, buses and approx. half a mile from Woodside Park underground station.

The apartment benefits from recently fitted kitchen and shower room, guest wc and direct access to attractive communal gardens. Chain free.

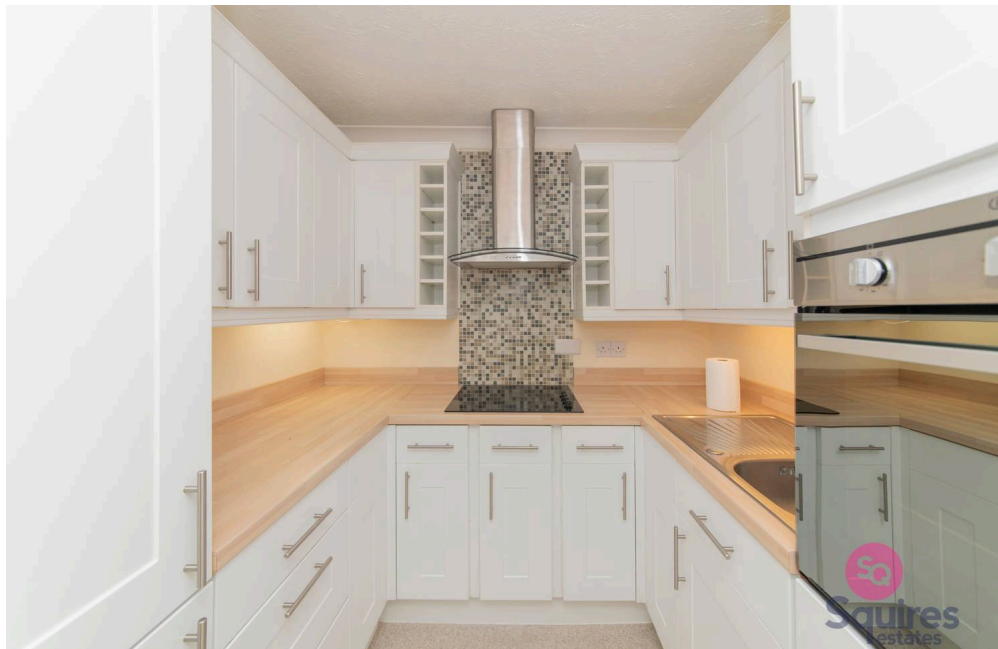
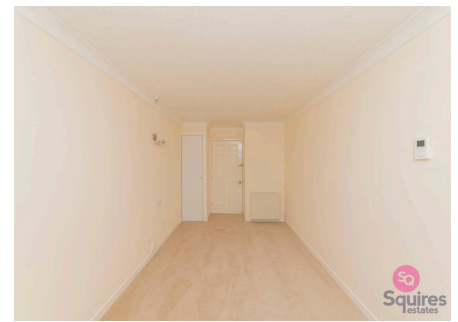
The block offers a communal lounge, kitchen, conservatory and laundry room.

Council Tax band: E

Tenure: Leasehold

EPC Energy Efficiency Rating: C

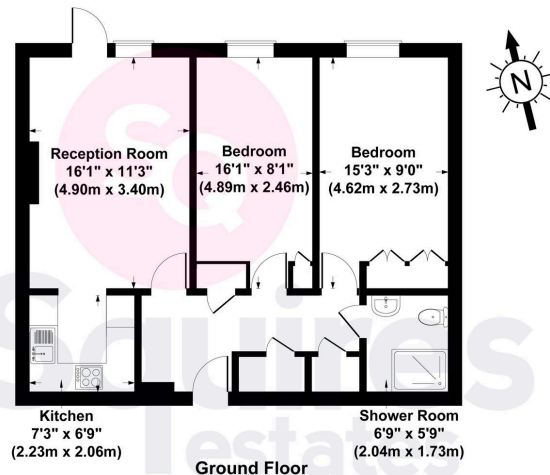
EPC Environmental Impact Rating: D



- Over 60's retirement block
- Ground floor
- Direct access to gardens
- Two bedrooms
- Communal living space
- Lovely communal gardens
- Chain free
- Communal laundry room



Homan Court , Friern Watch Avenue, London, N12 9HW
Gross Internal Area 678 sq ft /63 sq metres



All measurements of walls, doors, windows, fittings and appliances, including their size and location, are shown as standard sizes and therefore cannot be regarded as a representation by the seller.