

Squires Lane, London – N3

£650,000 Freehold

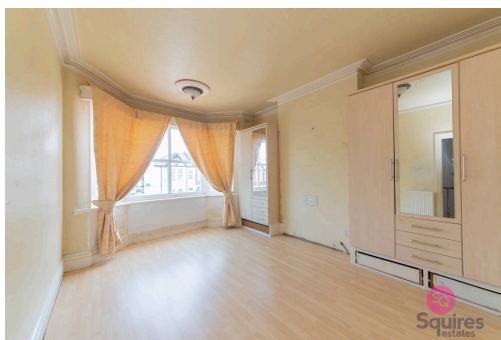
This three-bedroom terraced home (approximately 1,216 sq ft) offers excellent potential for modernisation and extension (STPP). The ground floor provides generous and versatile living space, featuring an impressive 29'8" double reception lounge at the front, a separate dining room measuring 14'11", and a conservatory that overlooks the garden, creating an excellent flow for living and entertaining. The kitchen is positioned at the rear of the property in an L-shaped layout, adjacent to both the dining room and conservatory. This arrangement presents clear potential for opening up or extending to create a large open-plan kitchen, dining, and family area (subject to the usual consents), making it ideal for modern family living. Additionally, the kitchen benefits from direct access to the garden. At the rear, the property features a well-proportioned garden extending approximately 42 feet. Upstairs, there are three well-proportioned bedrooms, including a generous principal bedroom measuring 15'3" and a spacious second bedroom, along with a family bathroom. Further advantages include no onward chain and excellent scope for reconfiguration and enhancement throughout, making this an ideal opportunity to create a bespoke family home. Ideally located near Victoria Park, Finchley Central underground station and a variety of well-regarded schools, this property combines size, location, and future potential.

Council Tax band: E

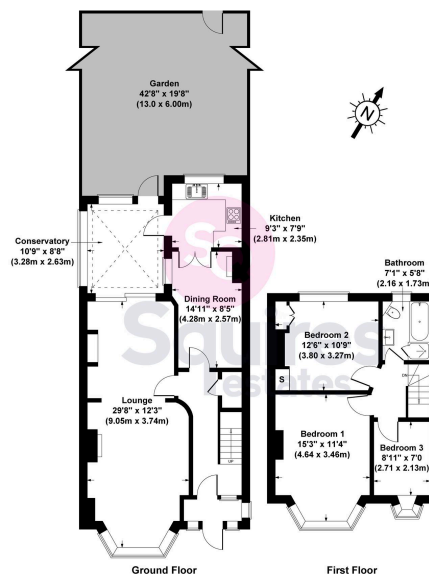
Tenure: Freehold



- Three-bedroom mid-terraced house
- Potential to extend (STPP)
- Original features
- Chain free
- Well located
- Separate dining area with potential for open-plan living (subject to renovation)
- 29 ft Double reception lounge
- In need of modernisation



Squires Lane, London N3 2AB
Gross Internal Area 1216 sq ft / 113 sq metres



All measurements of walls, doors, windows, fittings and appliances, including their size and location, are shown as standard sizes and therefore cannot be regarded as a representation by the seller.