

Squires Lane, London – £685,000 Freehold

A well presented four-bedroom terraced family home, offering well-proportioned accommodation arranged over three floors. The property features two reception rooms, a modern 12ft kitchen, a contemporary family bathroom, and a convenient ground-floor shower room. The house offers a 15'6" x 15'0" loft bedroom, further benefits include a private rear garden, ideal for entertaining and family enjoyment. Conveniently located within easy reach of Victoria Park, well-regarded local schools and excellent transport links, this is an ideal home for growing families.

Council Tax band: D

Tenure: Freehold

EPC Energy Efficiency Rating: C

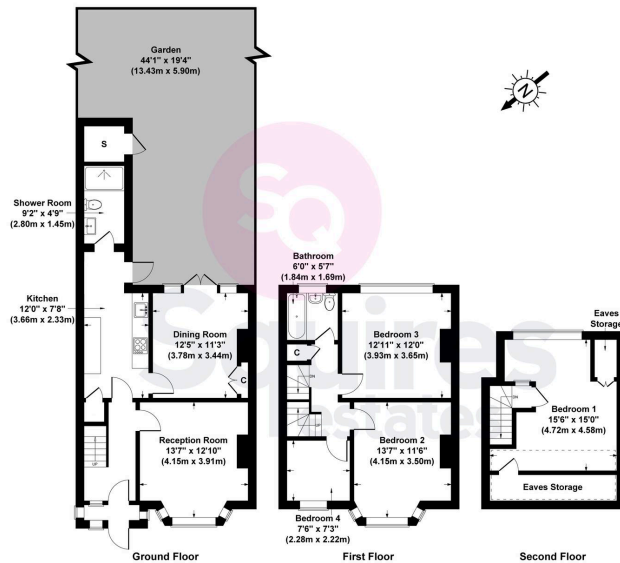
EPC Environmental Impact Rating: D



- › Four bedrooms
- › Terraced house
- › Great location
- › Two bathrooms
- › Two reception rooms
- › Garden storage
- › Close to 1300 square foot
- › Close to Finchley Central



Squires Lane, N3 2QS
Gross Internal Area 1292 sq ft / 120 sq metres
(not including eves or garden store)



All measurements of walls, doors, windows, fittings and appliances, including their size and location, are shown as standard sizes and therefore cannot be regarded as a representation by the seller.